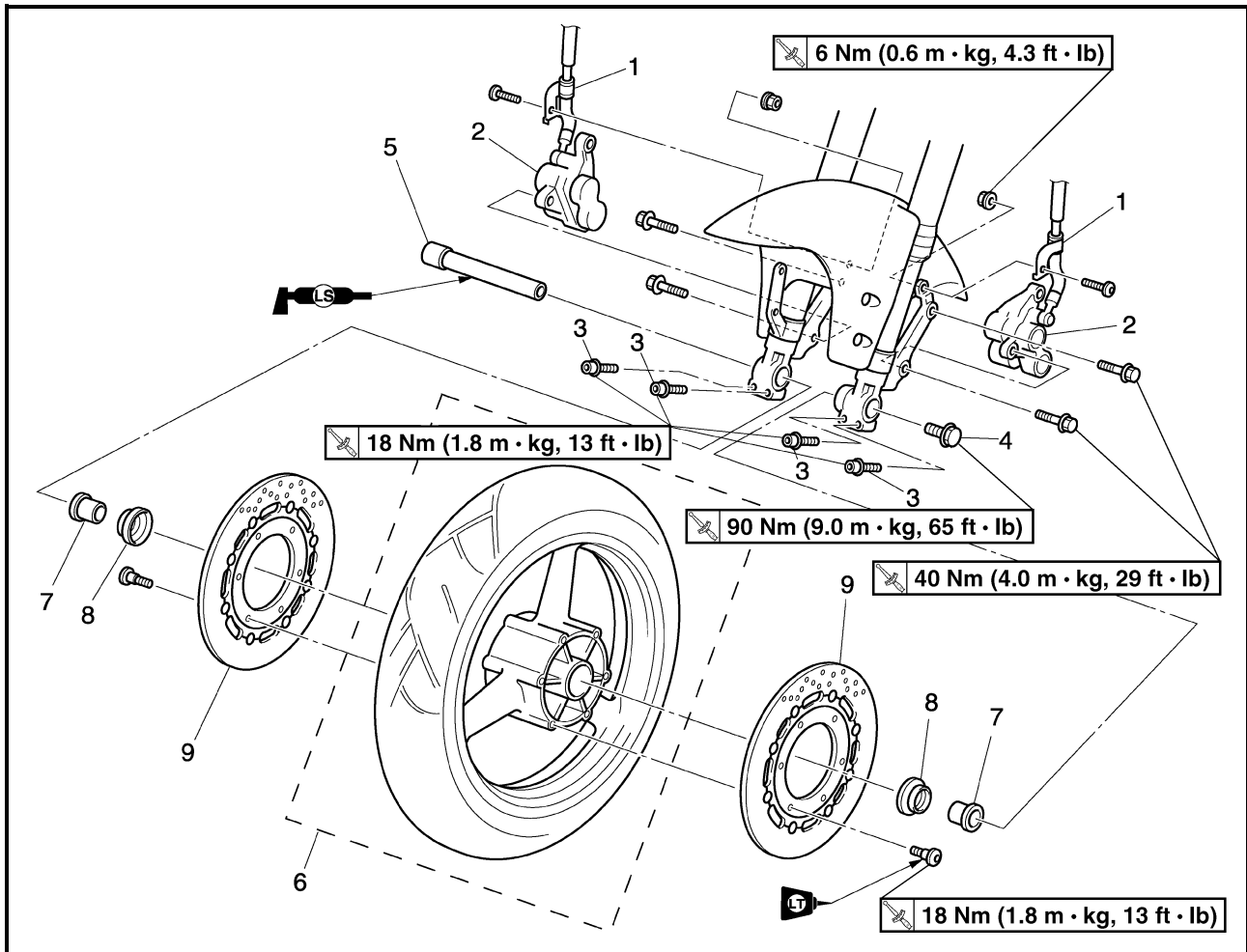


EAS00514

CHASSIS

FRONT WHEEL AND BRAKE DISCS

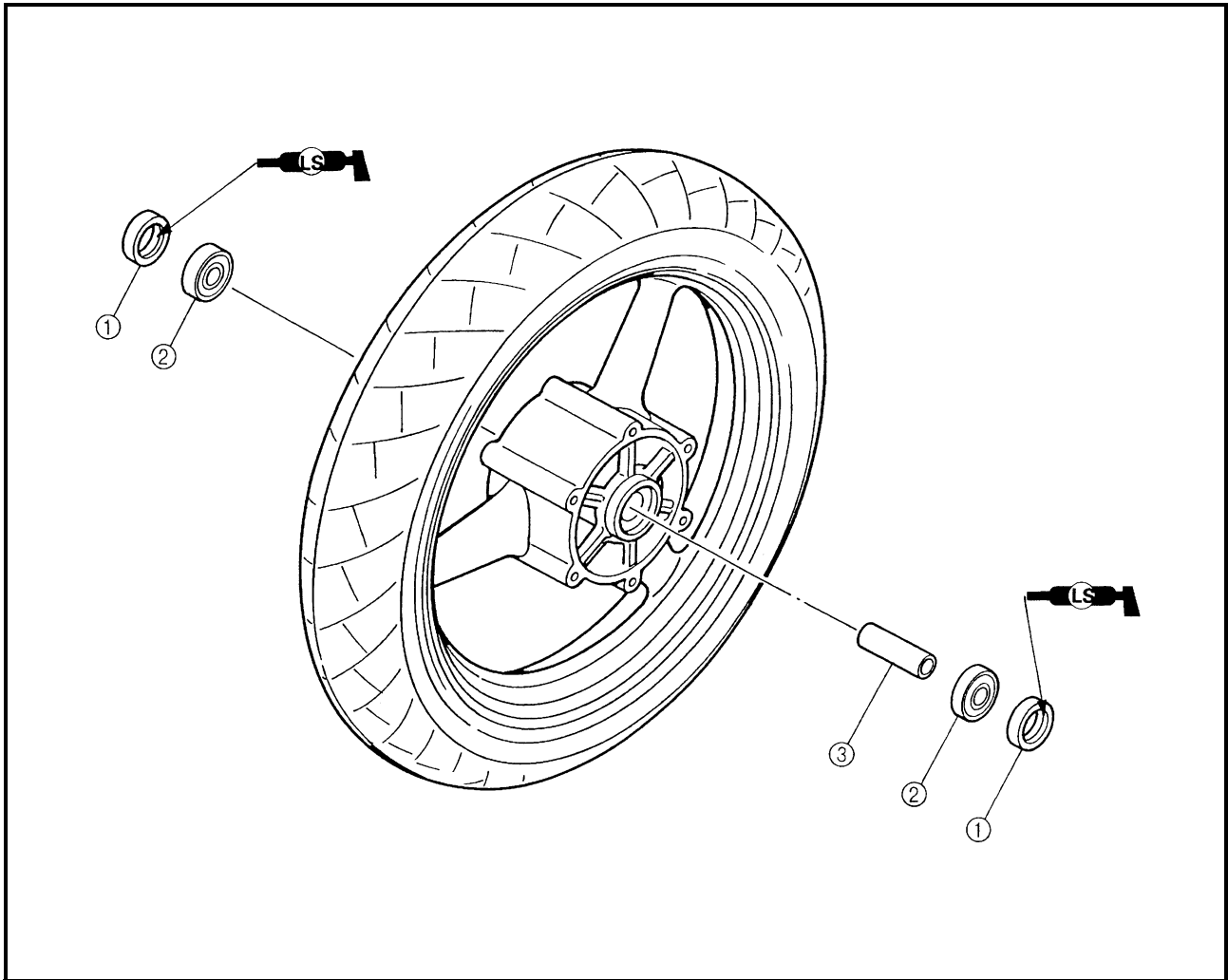


4

Order	Job/Part	Q'ty	Remarks
	Removing the front wheel and brake discs		Remove the parts in the order listed.
			NOTE: _____ Place the motorcycle on a suitable stand so that the front wheel is elevated.
1	Brake hose holder (left and right)	2	Loosen.
2	Brake caliper (left and right)	2	
3	Wheel axle pinch bolt	4	
4	Wheel axle bolt	1	
5	Front wheel axle	1	
6	Front wheel	1	
7	Collar (left and right)	2	For installation, reverse the removal procedure.
8	Oil seal cover (left and right)	2	
9	Brake disc (left and right)	2	

EAS00518

FRONT WHEEL



Order	Job/Part	Q'ty	Remarks
	Disassembling the front wheel		Remove the parts in the order listed.
①	Oil seal (left and right)	2	
②	Wheel bearing (left and right)	2	
③	Spacer	1	
			For assembly, reverse the disassembly procedure.



EAS00521

REMOVING THE FRONT WHEEL

1. Stand the motorcycle on a level surface.

⚠ WARNING

Securely support the motorcycle so that there is no danger of it falling over.

NOTE:

Place the motorcycle on a suitable stand so that the front wheel is elevated.

2. Remove:

- left brake caliper
- right brake caliper

NOTE:

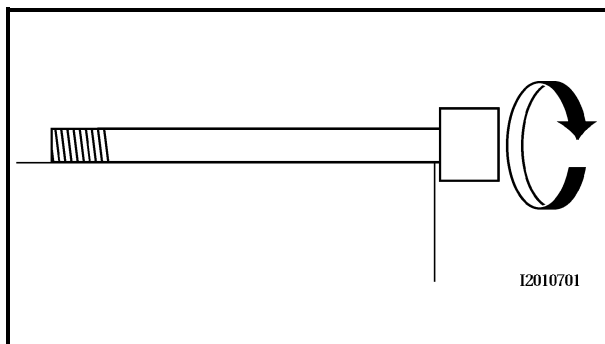
Do not apply the brake lever when removing the brake calipers.

3. Elevate:

- front wheel

NOTE:

Place the motorcycle on a suitable stand so that the front wheel is elevated.



EAS00525

CHECKING THE FRONT WHEEL

1. Check:

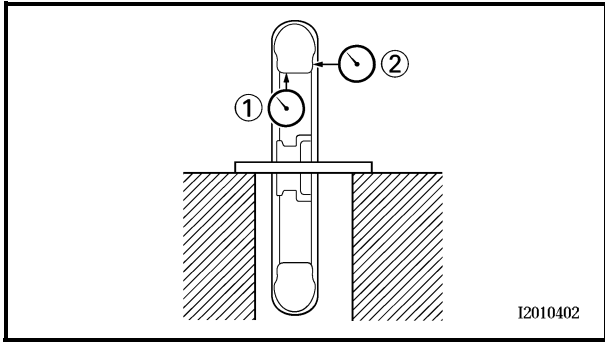
- wheel axle
Roll the wheel axle on a flat surface.
Bends → Replace.

⚠ WARNING

Do not attempt to straighten a bent wheel axle.


2. Check:

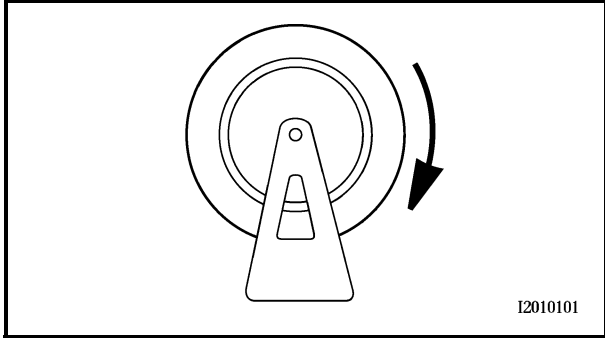
- tire
- front wheel
Damage/wear → Replace.
Refer to “CHECKING THE TIRES” and “CHECKING THE WHEELS” in chapter 3.



3. Measure:

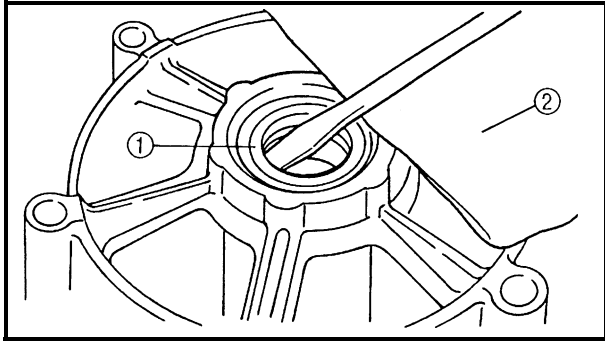
- radial wheel runout ①
 - lateral wheel runout ②
- Over the specified limits → Replace.

	Radial wheel runout limit
	1.0 mm (0.04 in)
	Lateral wheel runout limit
	0.5 mm (0.02 in)



4. Check:

- wheel bearings
Front wheel turns roughly or is loose → Replace the wheel bearings.
- oil seals
Damage/wear → Replace.

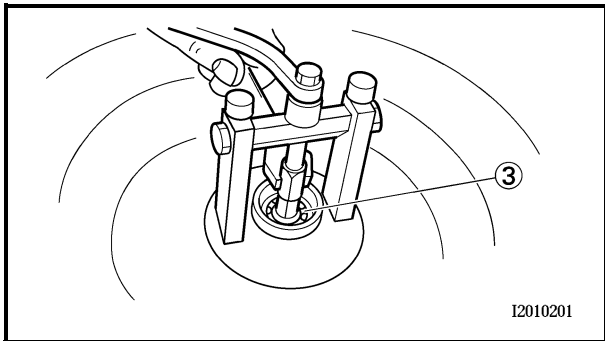


5. Replace:

- wheel bearings **New**
- oil seals **New**

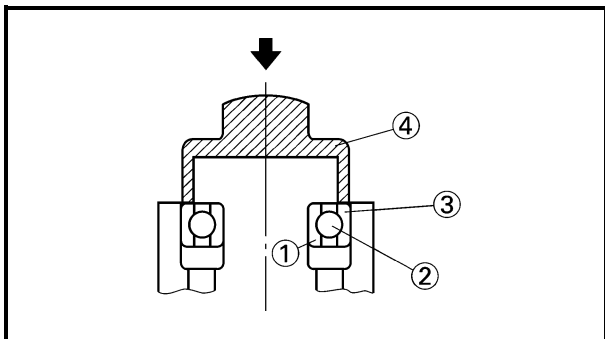
-
- Clean the outside of the front wheel hub.
 - Remove the oil seals ① with a flat-head screwdriver.

NOTE: _____
To prevent damaging the wheel, place a rag ② between the screwdriver and the wheel surface.



- Remove the wheel bearings ③ with a general bearing puller.
- Install the new wheel bearings and oil seals in the reverse order of disassembly.

CAUTION: _____
Do not contact the wheel bearing inner race ① or balls ②. Contact should be made only with the outer race ③.



NOTE: _____
Use a socket ④ that matches the diameter of the wheel bearing outer race and oil seal.



Brake disc bolt
18 Nm (1.8 m · kg, 13 ft · lb)
LOCTITE®

- d. Measure the brake disc deflection.
- e. If out of specification, repeat the adjustment steps until the brake disc deflection is within specification.
- f. If the brake disc deflection cannot be brought within specification, replace the brake disc.



EAS00545

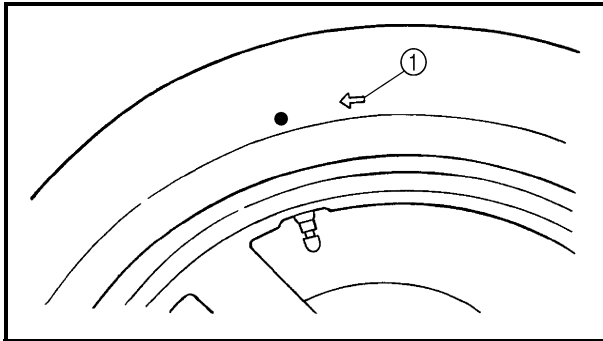
INSTALLING THE FRONT WHEEL

The following procedure applies to both brake discs.

- 1. Lubricate:
 - wheel axle
 - oil seal lips



Recommended lubricant
Lithium-soap-based grease



- 2. Lift the wheel up between the fork legs.
- 3. Insert the wheel axle.

NOTE: _____
 Install the tire with the mark ① pointing in the direction of wheel rotation.

- 4. Lower the front wheel so that it is on the ground.
- 5. Install the brake calipers by installing the bolts, and then tightening them to the specified torque.

NOTE: _____
 Make sure that there is enough space between the brake pads before installing the brake calipers onto the brake discs.

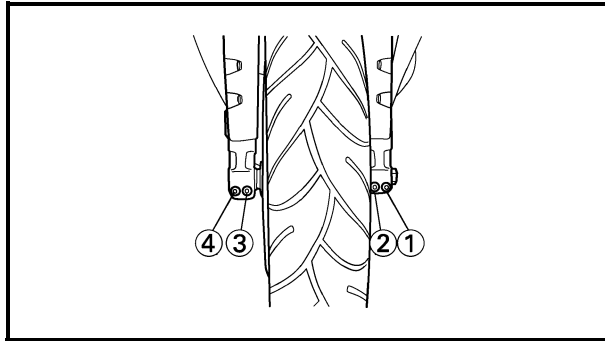


Brake caliper bolt
40 Nm (4.0 m · kg, 29 ft · lb)

- 6. Install the brake hose holders by installing the bolts and nuts.
- 7. Secure the wheel axle by installing the axle bolt, and then tightening it to the specified torque.



Axle bolt
90 Nm (9.0 m · kg, 65 ft · lb)



8. Tighten wheel axle pinch bolt ①, and then pinch bolt ② to the specified torque.



Wheel axle pinch bolt
18 Nm (1.8 m · kg, 13 ft · lb)

9. Tap the outer side of the right fork leg with a rubber mallet to align it with the end of the wheel axle.

10. Tighten wheel axle pinch bolt ③, and then pinch bolt ④ to the specified torque.



Wheel axle pinch bolt
18 Nm (1.8 m · kg, 13 ft · lb)

11. While applying the front brake, push down hard on the handlebar several times to check for proper fork operation.

EAS00549

ADJUSTING THE FRONT WHEEL STATIC BALANCE

NOTE: _____

- After replacing the tire, wheel or both, the front wheel static balance should be adjusted.
- Adjust the front wheel static balance with the brake discs installed.

1. Remove:
 - balancing weight(s)
2. Find:
 - front wheel's heavy spot

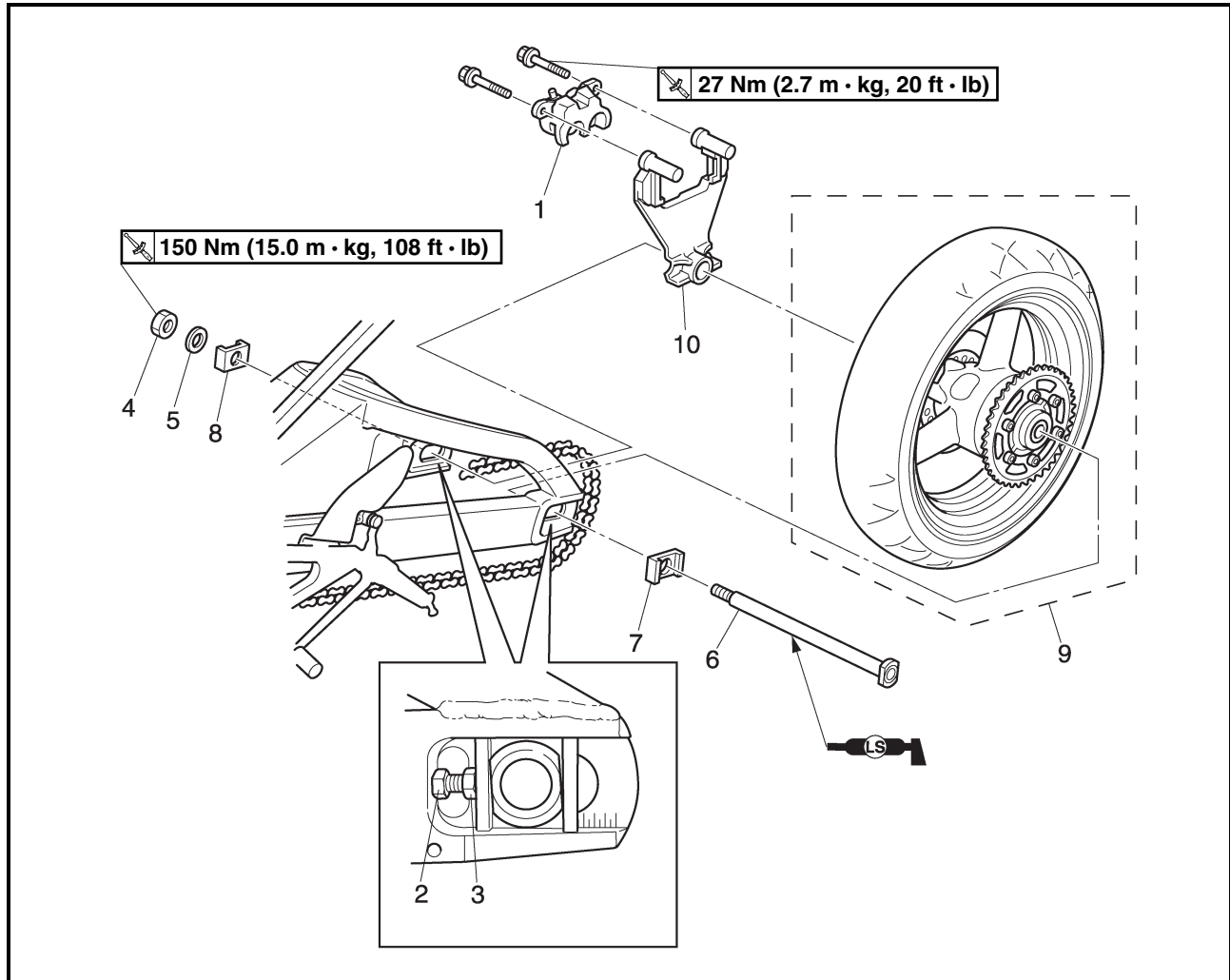
NOTE: _____

Place the front wheel on a suitable balancing stand.



EAS00551

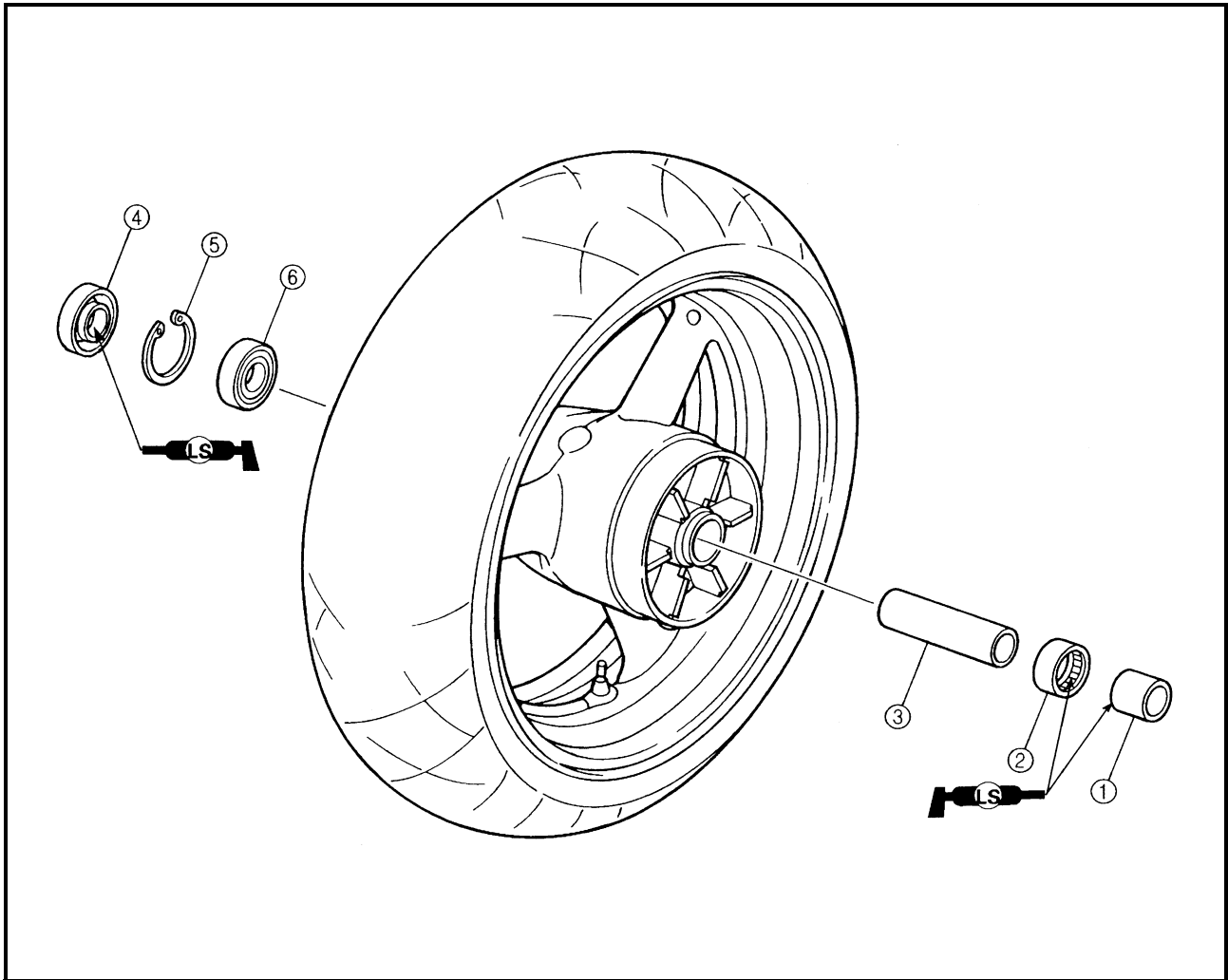
REAR WHEEL AND BRAKE DISC



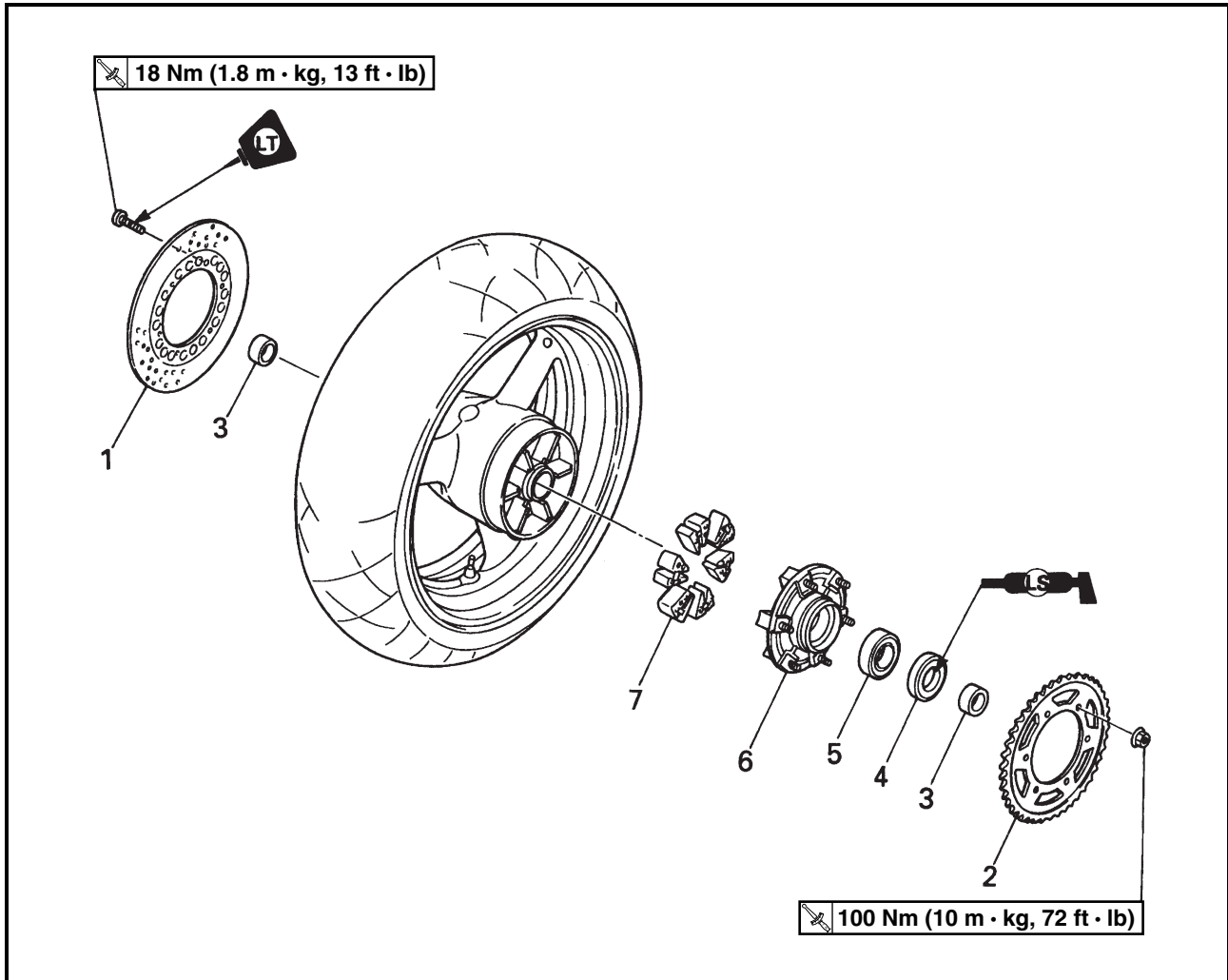
Order	Job/Part	Q'ty	Remarks
	Removing the rear wheel		Remove the parts in the order listed. NOTE: _____ Place the motorcycle on a suitable stand so that the rear wheel is elevated.
1	Brake caliper	1	
2	Locknut (left and right)	2	Loosen.
3	Adjusting bolt (left and right)	2	Loosen.
4	Wheel axle nut	2	
5	Washer	1	
6	Rear wheel axle	1	
7	Left adjusting block	1	
8	Right adjusting block	1	NOTE: _____ Make sure that the tapered side of the right adjusting block faces the wheel.
9	Rear wheel	1	
10	Brake caliper bracket	1	
			For installation, reverse the removal procedure.

EAS00560

REAR WHEEL



Order	Job/Part	Q'ty	Remarks
	Disassembling the rear wheel		Remove the parts in the order listed.
①	Spacer	1	
②	Bearing	1	
③	Spacer	1	
④	Oil seal	1	
⑤	Circlip	1	
⑥	Bearing	1	
			For installation, reverse the disassembly procedure.



Order	Job/Part	Q'ty	Remarks
	Remove the brake disc and rear wheel sprocket		Remove the parts in the order listed.
1	Brake disc	1	
2	Rear wheel sprocket	1	
3	Collar (left and right)	2	
4	Oil seal	1	
5	Bearing	1	
6	Rear wheel drive hub	1	
7	Rear wheel drive hub damper	6	
			For installation, reverse the removal procedure.



EAS00561

REMOVING THE REAR WHEEL

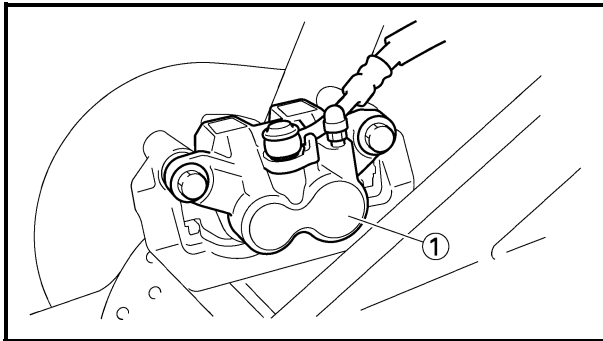
1. Stand the motorcycle on a level surface.

⚠ WARNING

Securely support the motorcycle so that there is no danger of it falling over.

NOTE:

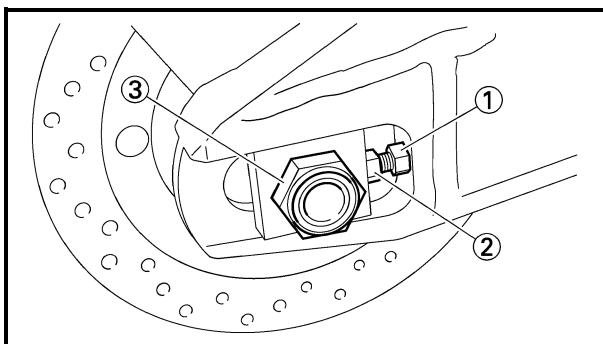
Place the motorcycle on a suitable stand so that the rear wheel is elevated.



2. Remove:
 - brake caliper ①

NOTE:

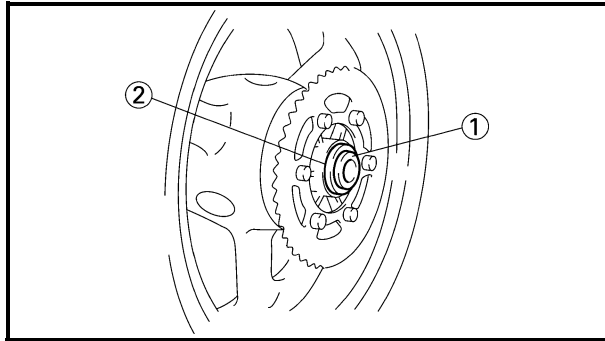
Do not depress the brake pedal when removing the brake caliper.



3. Loosen:
 - locknut ①
 - adjusting bolt ②
4. Remove:
 - wheel axle nut ③
 - wheel axle
 - rear wheel

NOTE:

Push the rear wheel forward and remove the drive chain from the rear wheel sprocket.



5. Remove:
 - left collar ①
 - rear wheel drive hub ②
 - rear wheel drive hub damper
 - right collar

EAS00565

CHECKING THE REAR WHEEL

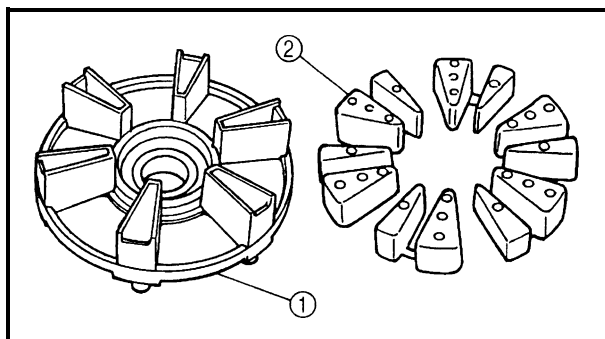
1. Check:
 - wheel axle
 - rear wheel
 - wheel bearings
 - oil seals

Refer to “CHECKING THE FRONT WHEEL”.
2. Check:
 - tire
 - rear wheel

Damage/wear → Replace.

Refer to “CHECKING THE TIRES” and “CHECKING THE WHEELS” in chapter 3.
3. Measure:
 - radial wheel runout
 - lateral wheel runout

Refer to “CHECKING THE FRONT WHEEL”.



EAS00567

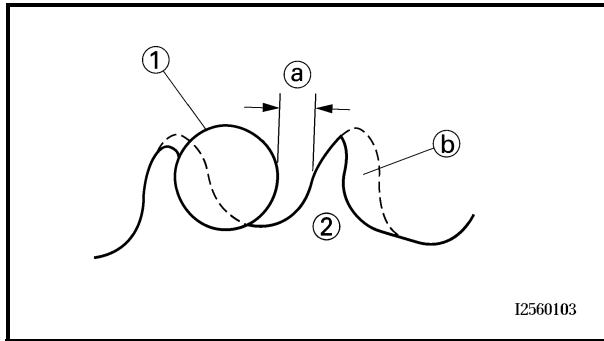
CHECKING THE REAR WHEEL DRIVE HUB

1. Check:
 - rear wheel drive hub ①

Cracks/damage → Replace.

 - rear wheel drive hub dampers ②

Damage/wear → Replace.



I2560103

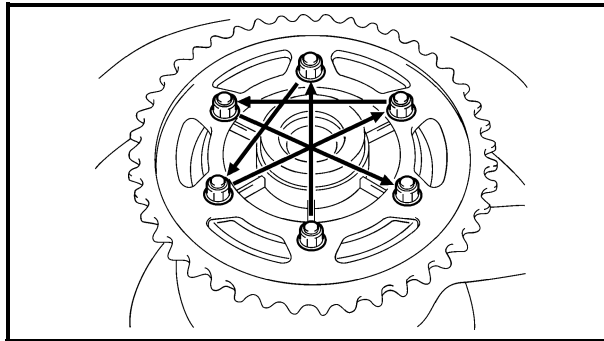
EAS00568

CHECKING AND REPLACING THE REAR WHEEL SPROCKET

1. Check:

- rear wheel sprocket
- More than 1/4 tooth (a) wear → Replace the rear wheel sprocket.
 Bent teeth → Replace the rear wheel sprocket.

- (b) Correct
- (1) Drive chain roller
- (2) Rear wheel sprocket



2. Replace:

- rear wheel sprocket



- a. Remove the self-locking nuts and the rear wheel sprocket.
- b. Clean the rear wheel drive hub with a clean cloth, especially the surfaces that contact the sprocket.
- c. Install the new rear wheel sprocket.



Rear wheel sprocket self-locking nut
100 Nm (10 m · kg, 72 ft · lb)

NOTE:

Tighten the self-locking nuts in stages and in a crisscross pattern.



EAS00571

INSTALLING THE REAR WHEEL

1. Lubricate:

- wheel axle
- wheel bearings
- oil seal lips



Recommended lubricant
Lithium-soap-based grease



2. Adjust:
 - drive chain slack



Drive chain slack
40 ~ 50 mm (1.57 ~ 1.97 in)

Refer to “ADJUSTING THE DRIVE CHAIN SLACK” in chapter 3.

3. Tighten:
 - wheel axle nut

150 Nm (15 m · kg, 108 ft · lb)

- brake caliper bolts

27 Nm (2.7 m · kg, 20 ft · lb)

WARNING

Make sure the brake hose is routed properly.

CAUTION:

Do not loosen the wheel axle nut after tightening it to the specified torque. If the groove in the wheel axle nut is not aligned with the cotter pin hole in the wheel axle, tighten the nut further until they are aligned.

EAS00575

ADJUSTING THE REAR WHEEL STATIC BALANCE

NOTE:

- After replacing the tire, wheel or both, the rear wheel static balance should be adjusted.
- Adjust the rear wheel static balance with the brake disc and rear wheel drive hub installed.

1. Adjust:

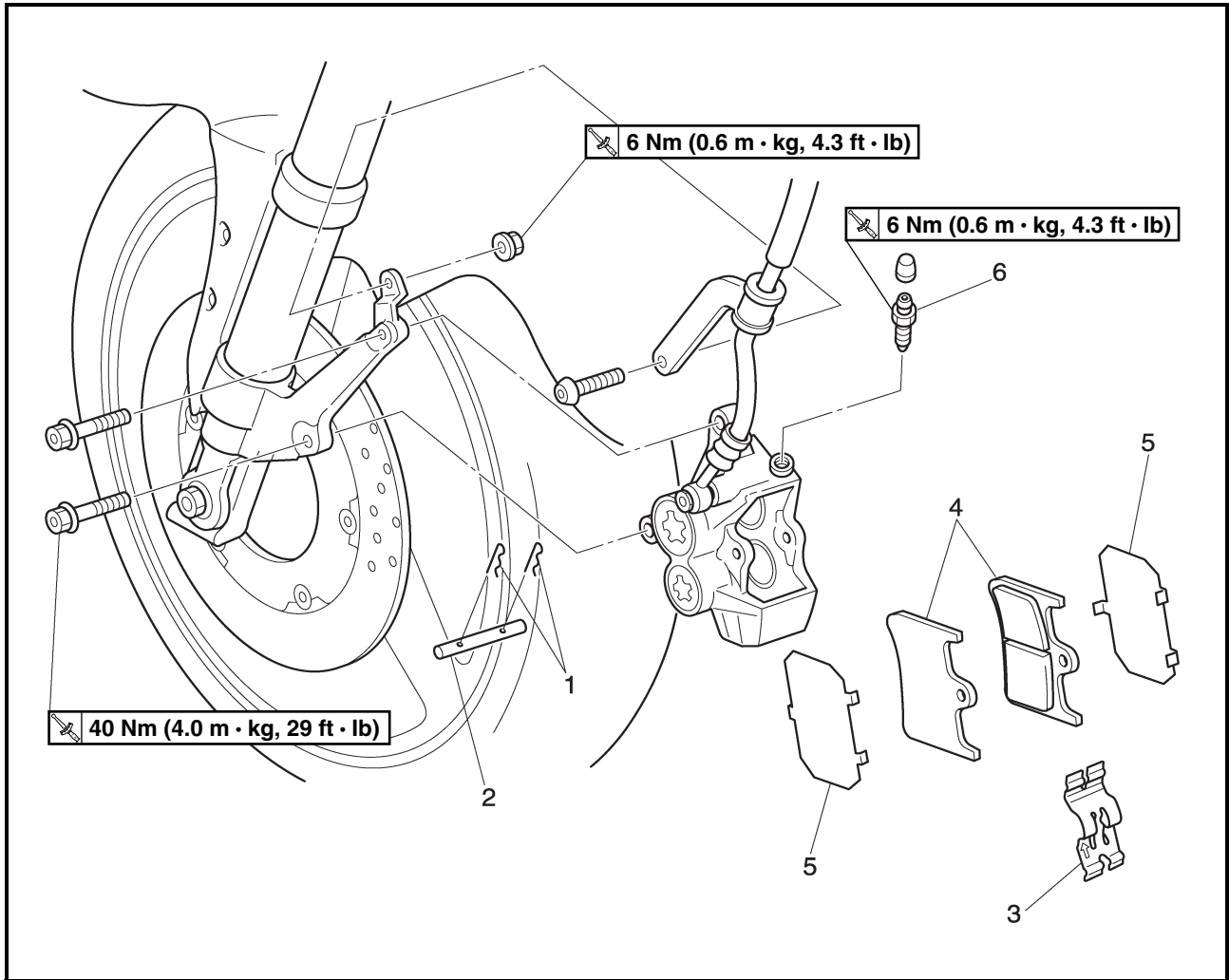
- rear wheel static balance

Refer to “ADJUSTING THE FRONT WHEEL STATIC BALANCE”.

EAS00577

FRONT AND REAR BRAKES

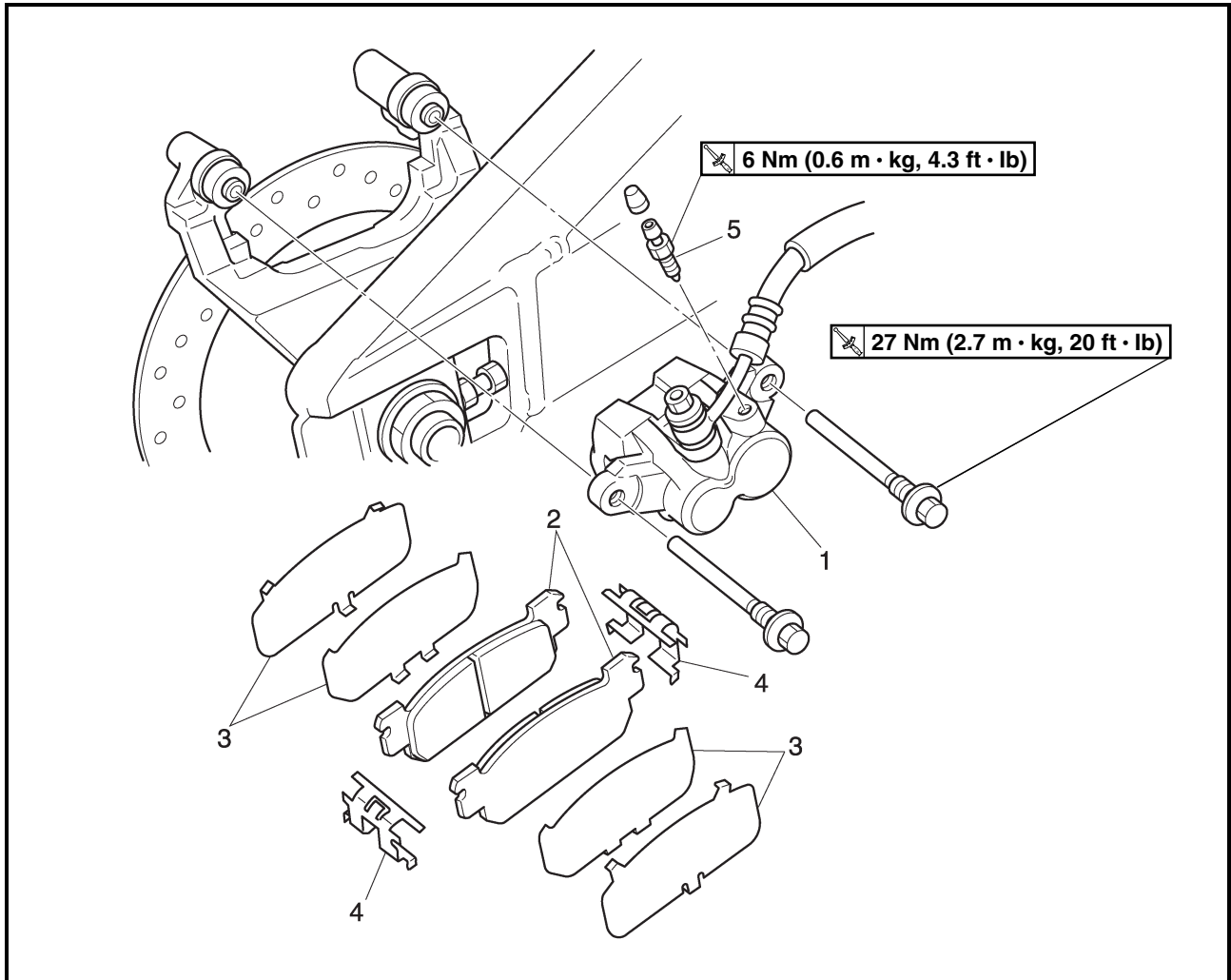
FRONT BRAKE PADS



Order	Job/Part	Q'ty	Remarks
	Removing the front brake pads		Remove the parts in the order listed. The following procedure applies to both of the front brake calipers.
1	Brake pad clip	2	
2	Brake pad pin	1	
3	Brake pad spring	1	
4	Brake pad	2	
5	Brake pad shim	2	
6	Bleed screw	1	
			For installation, reverse the removal procedure.



REAR BRAKE PADS



Order	Job/Part	Q'ty	Remarks
	Removing the rear brake pads		Remove the parts in the order listed.
1	Brake caliper	1	
2	Brake pad	2	
3	Brake pad shim	2/2	
4	Brake pad spring	2	
5	Bleed screw	1	
			For installation, reverse the removal procedure.



EAS00579

CAUTION:

Disc brake components rarely require disassembly.

Therefore, always follow these preventive measures:

⚠ WARNING

- Never disassemble brake components unless absolutely necessary.
- If any connection on the hydraulic brake system is disconnected, the entire brake system must be disassembled, drained, cleaned, properly filled, and bled after reassembly.
- Never use solvents on internal brake components.
- Use only clean or new brake fluid for cleaning brake components.
- Brake fluid may damage painted surfaces and plastic parts. Therefore, always clean up any spilt brake fluid immediately.
- Avoid brake fluid coming into contact with the eyes as it can cause serious injury.

FIRST AID FOR BRAKE FLUID ENTERING THE EYES:

- Flush with water for 15 minutes and get immediate medical attention.

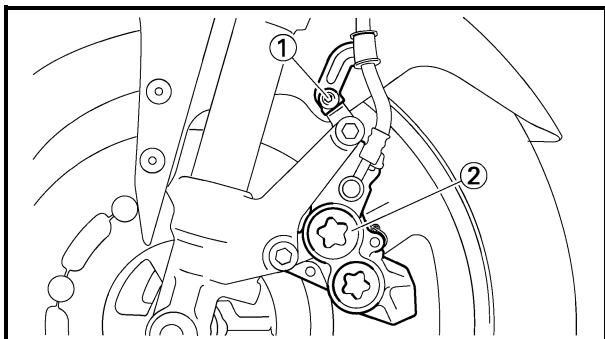
EAS00582

REPLACING THE FRONT BRAKE PADS

The following procedure applies to both brake calipers.

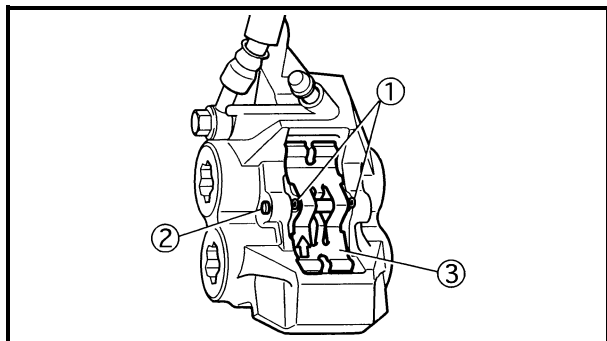
NOTE:

When replacing the brake pads, it is not necessary to disconnect the brake hose or disassemble the brake caliper.

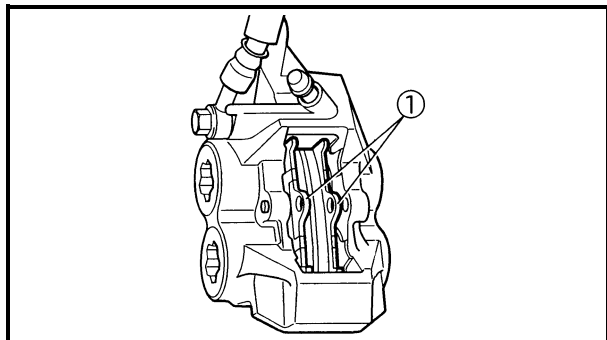


1. Remove:

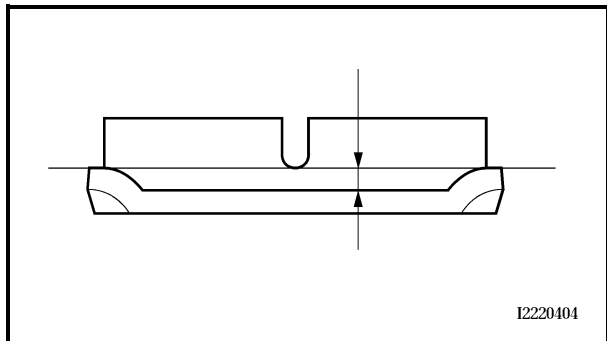
- brake hose holder ①
- brake caliper ②



2. Remove:
- brake pad clips ①
 - brake pad pins ②
 - brake pad spring ③



3. Remove:
- brake pads ①
(along with the brake pad shims)



4. Measure:
- brake pad wear limit
Out of specification → Replace the brake pads as a set.



Brake pad wear limit
0.5 mm (0.02 in)

5. Install:
- brake pad shims
(onto the brake pads)
 - brake pads
 - brake pad spring

NOTE: _____
Always install new brake pads, brake pad shims, and a brake pad spring as a set.

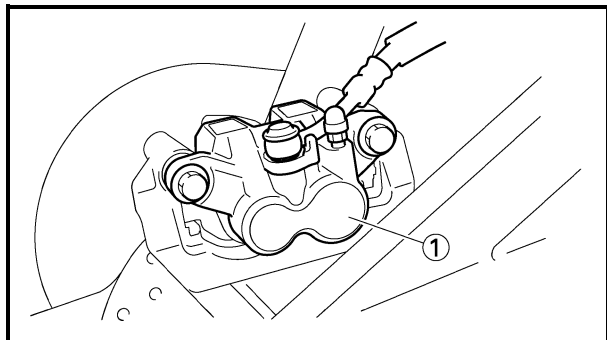


EAS00583

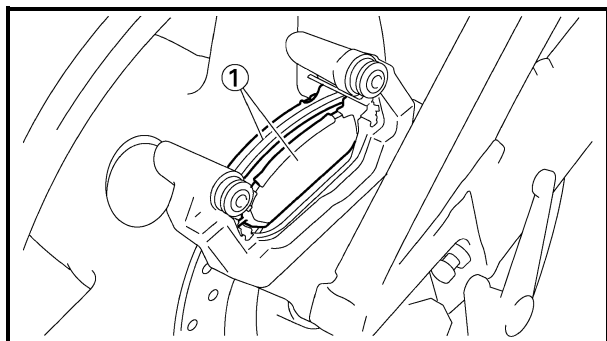
REPLACING THE REAR BRAKE PADS

NOTE:

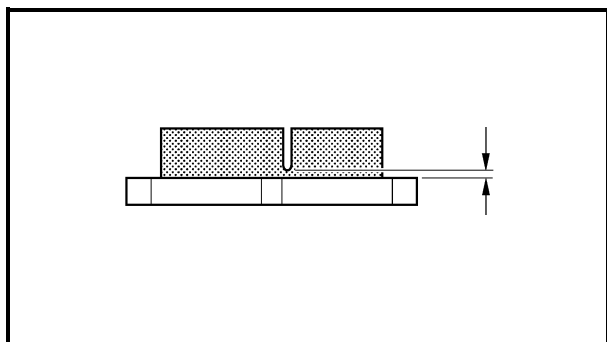
When replacing the brake pads, it is not necessary to disconnect the brake hose or disassemble the brake caliper.



1. Remove:
 - brake caliper ①



2. Remove:
 - brake pads ①
(along with the brake pad shims)



3. Measure:
 - brake pad wear limit
Out of specification → Replace the brake pads as a set.



Brake pad wear limit
0.8 mm (0.03 in)

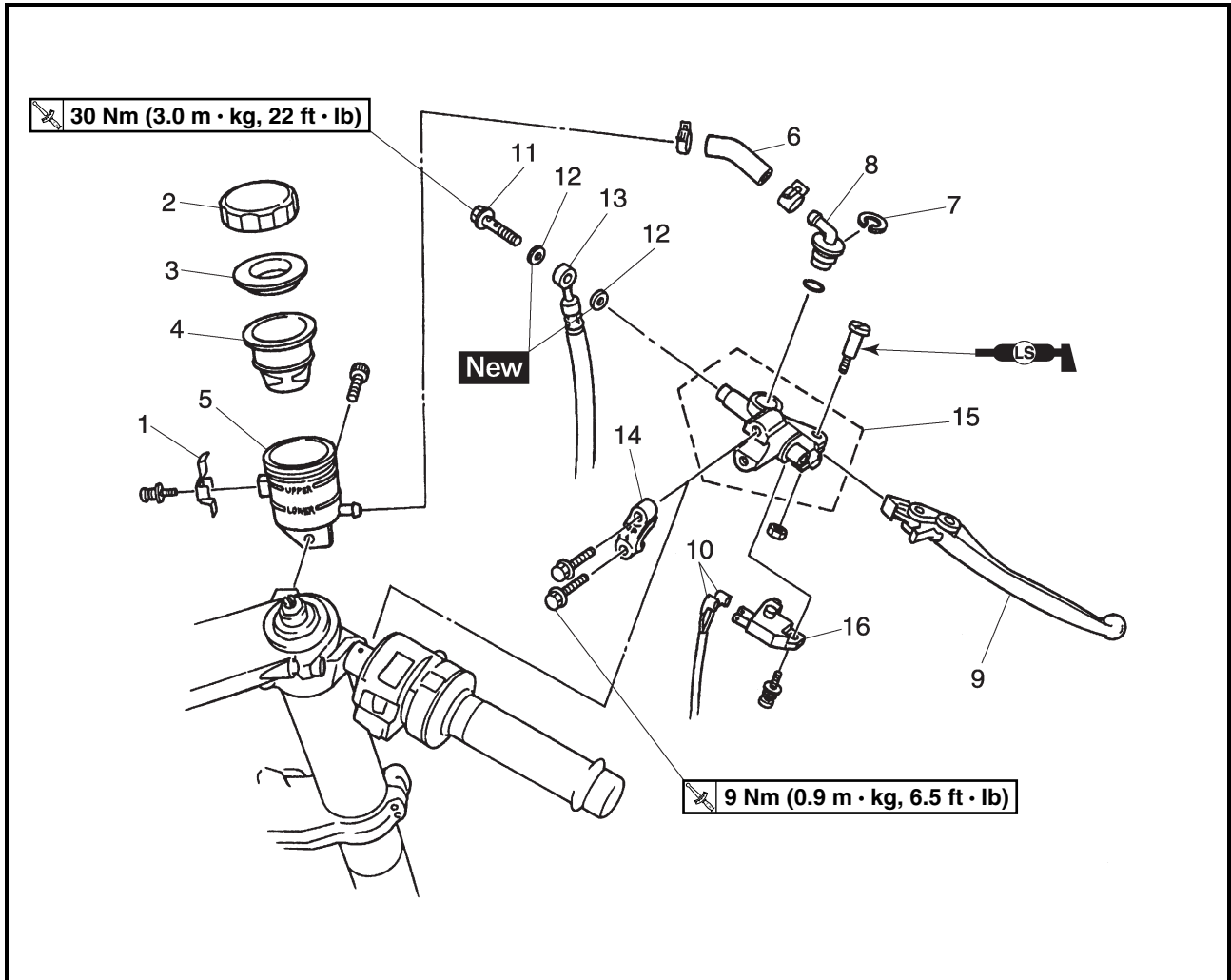
4. Install:
 - brake pad shims
(onto the brake pads)
 - brake pads

NOTE:

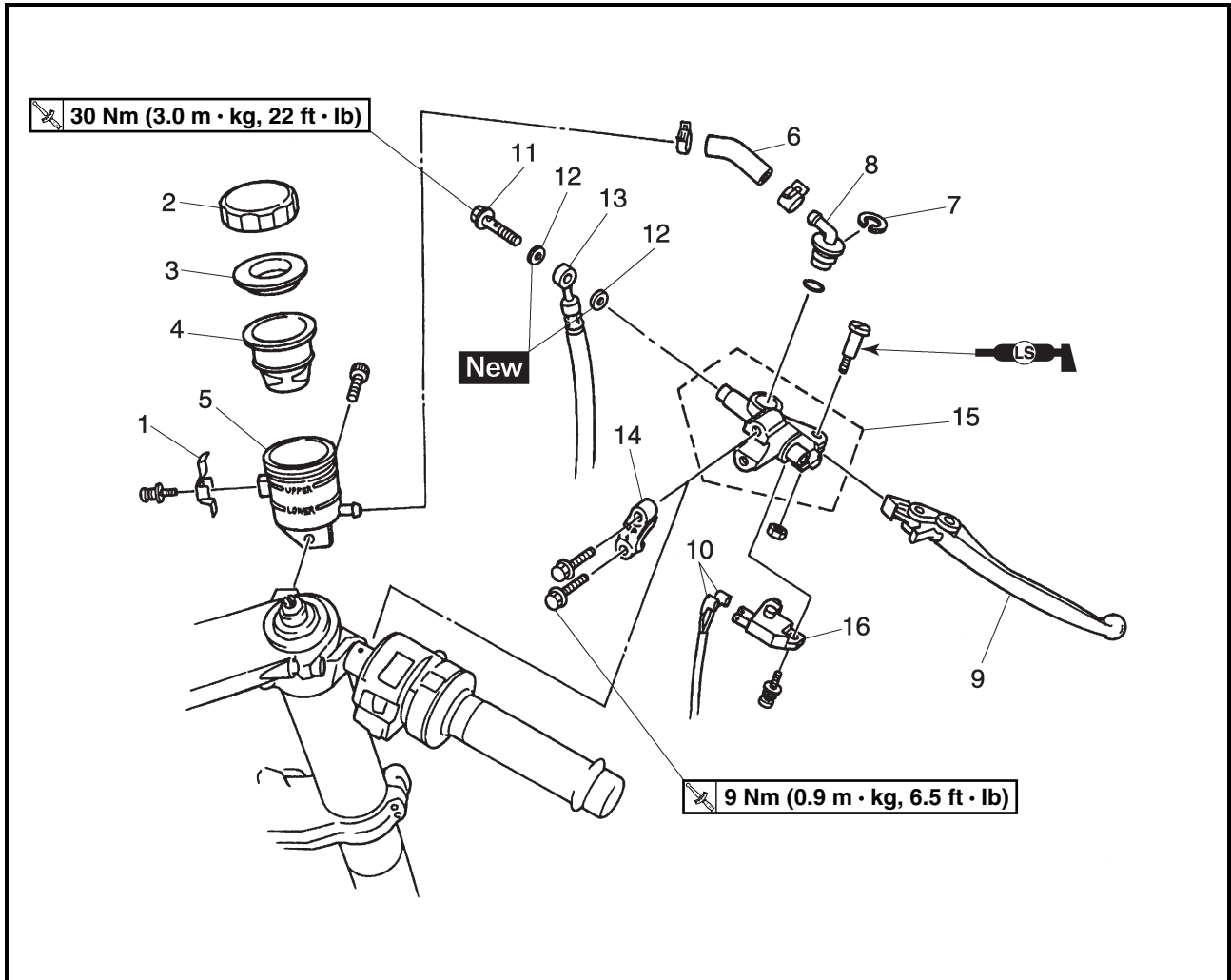
Always install new brake pads and brake pad shims as a set.

EAS00584

FRONT BRAKE MASTER CYLINDER



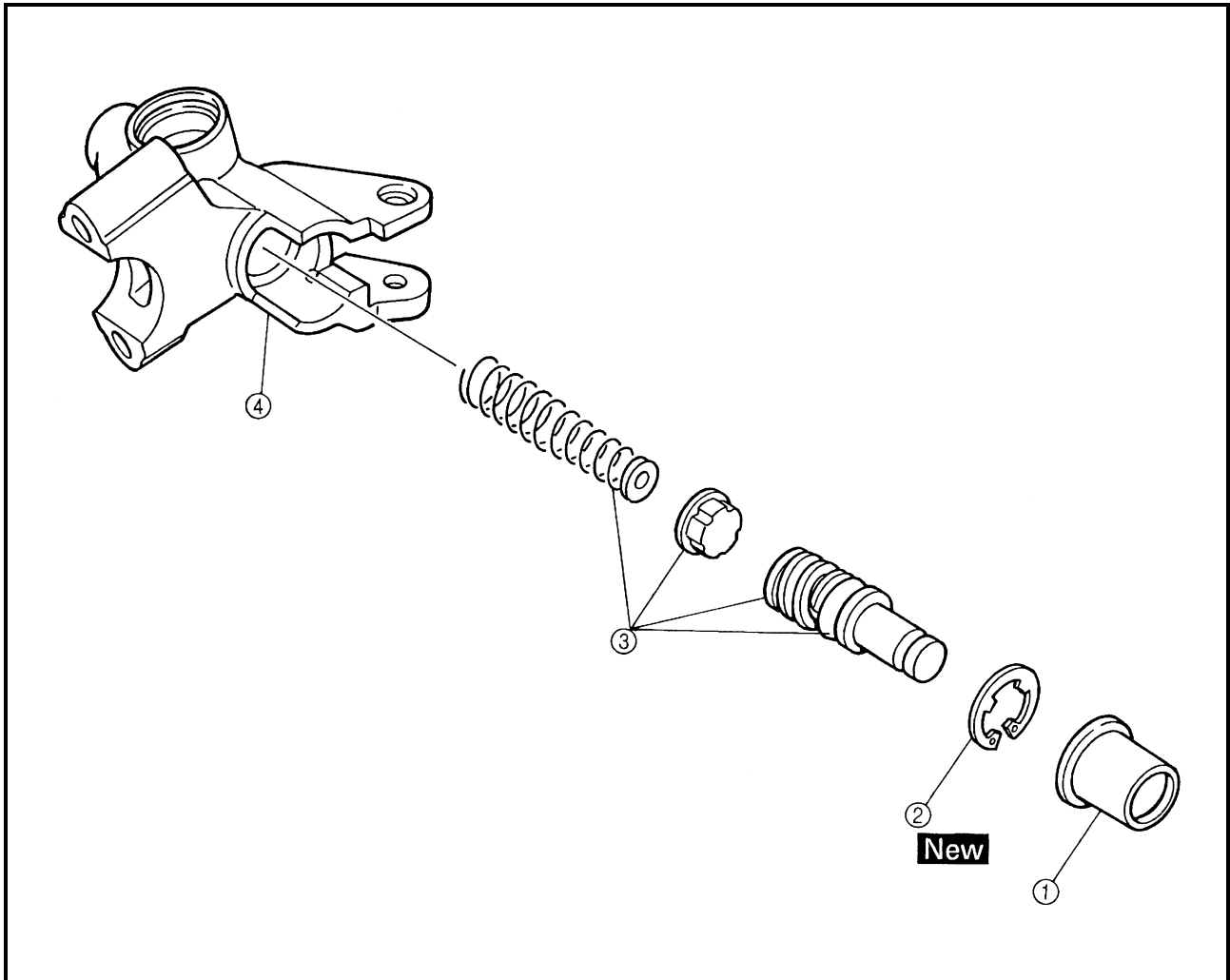
Order	Job/Part	Q'ty	Remarks
	Removing the front brake master cylinder		Remove the parts in the order listed.
	Brake fluid		Drain.
1	Brake fluid reservoir cap stopper	1	
2	Brake fluid reservoir cap	1	
3	Brake fluid reservoir diaphragm holder	1	
4	Brake fluid reservoir diaphragm	1	
5	Brake fluid reservoir	1	
6	Brake fluid reservoir hose	1	
7	Circlip	1	
8	Hose joint	1	
9	Brake lever	1	
10	Front brake switch connector	2	Disconnect.
11	Union bolt	1	
12	Copper washer	2	



Order	Job/Part	Q'ty	Remarks
13	Brake hose	1	For installation, reverse the removal procedure.
14	Brake master cylinder bracket	1	
15	Brake master cylinder	1	
16	Front brake switch	1	



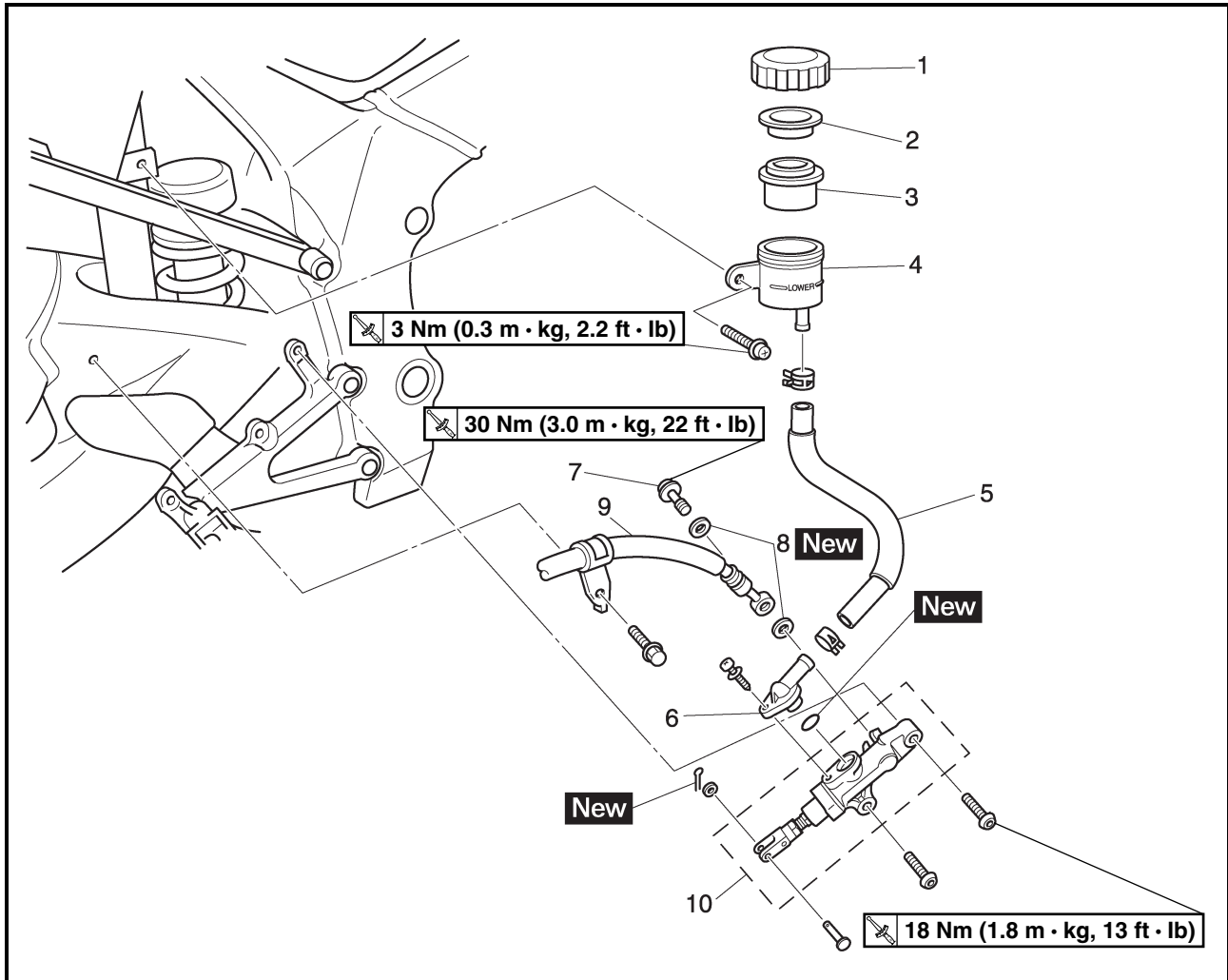
EAS00585



Order	Job/Part	Q'ty	Remarks
	Disassembling the front brake master cylinder		Remove the parts in the order listed.
①	Dust boot	1	
②	Circlip	1	
③	Brake master cylinder kit	1	
④	Brake master cylinder	1	
			For assembly, reverse the disassembly procedure.

EAS00586

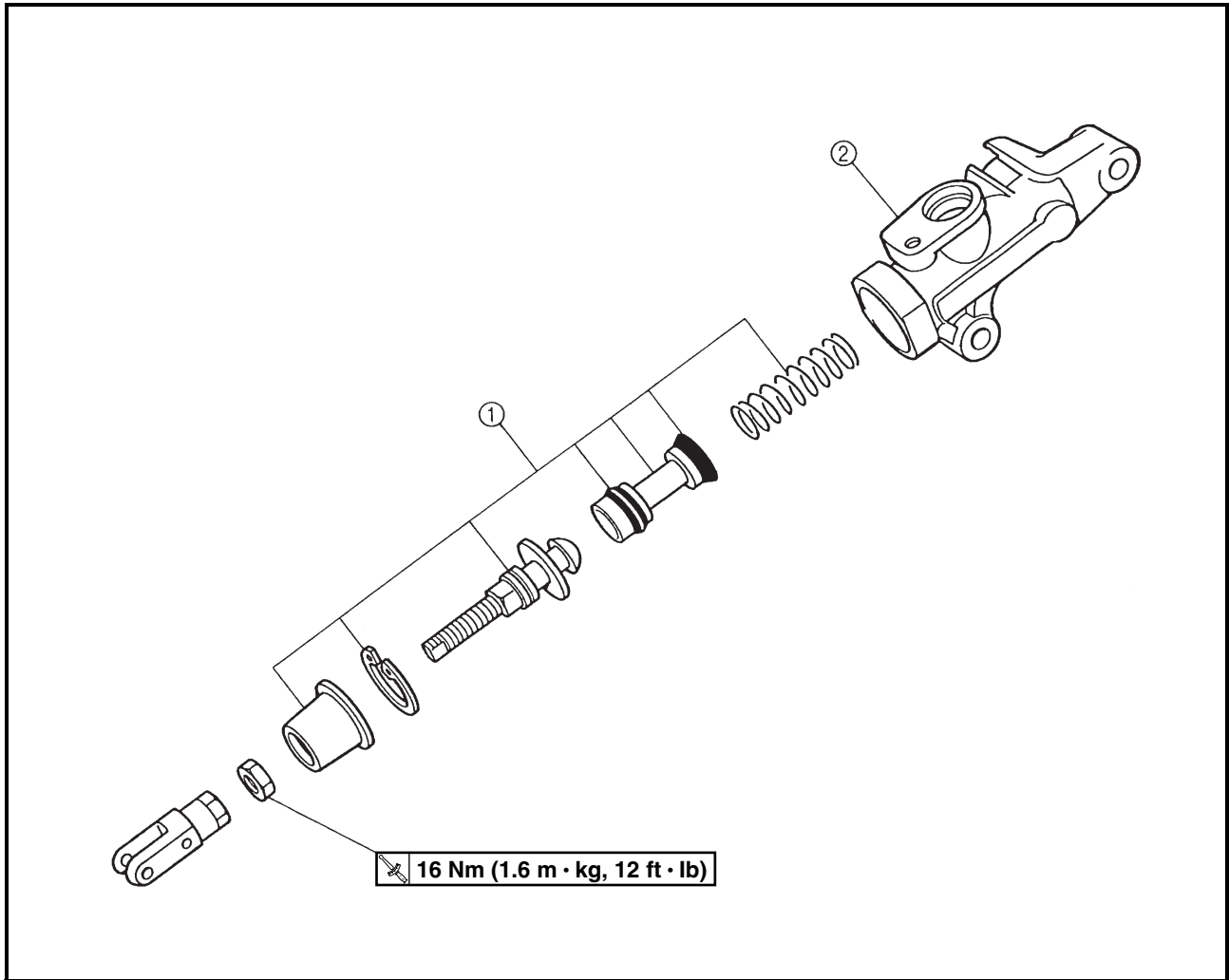
REAR BRAKE MASTER CYLINDER



Order	Job/Part	Q'ty	Remarks
	Removing the rear brake master cylinder		Remove the parts in the order listed.
	Brake fluid		Drain.
1	Brake fluid reservoir cap	1	
2	Brake fluid reservoir diaphragm holder	1	
3	Brake fluid reservoir diaphragm	1	
4	Brake fluid reservoir	1	
5	Brake fluid reservoir hose	1	
6	Hose joint	1	
7	Union bolt	1	
8	Copper washer	2	
9	Brake hose	1	
10	Brake master cylinder	1	
			For installation, reverse the removal procedure.



EAS00587



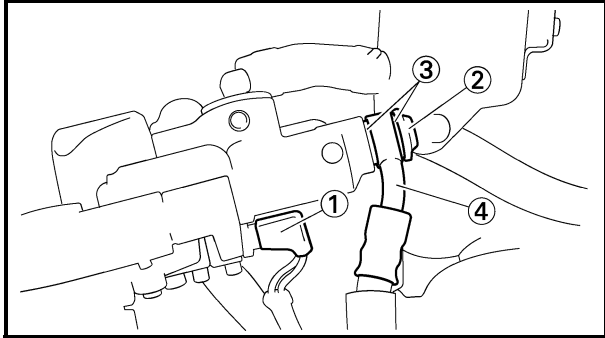
Order	Job/Part	Q'ty	Remarks
	Disassembling the rear brake master cylinder		Remove the parts in the order listed.
①	Brake master cylinder kit	1	
②	Brake master cylinder	1	
			For assembly, reverse the disassembly procedure.

EAS00588

DISASSEMBLING THE FRONT BRAKE MASTER CYLINDER

NOTE: _____

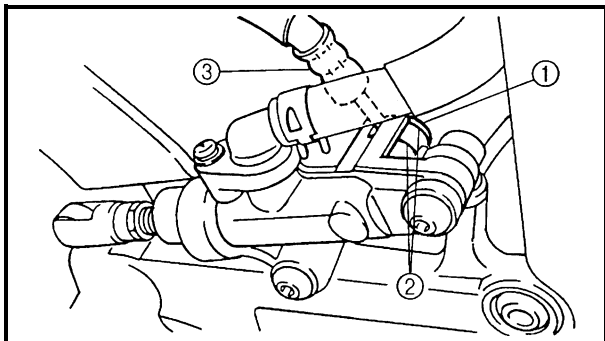
Before disassembling the front brake master cylinder, drain the brake fluid from the entire brake system.



1. Disconnect:
 - brake switch coupler ① (from the brake switch)
2. Remove:
 - union bolt ②
 - copper washers ③
 - brake hoses ④

NOTE: _____

To collect any remaining brake fluid, place a container under the master cylinder and the end of the brake hose.



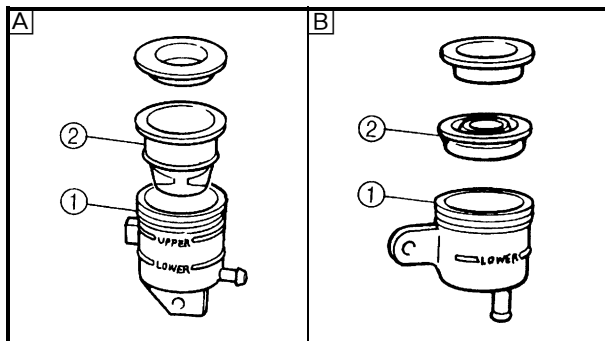
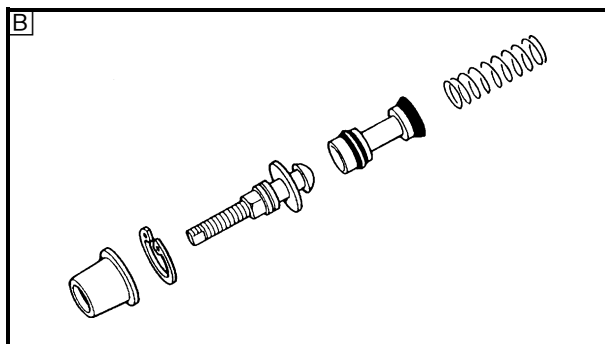
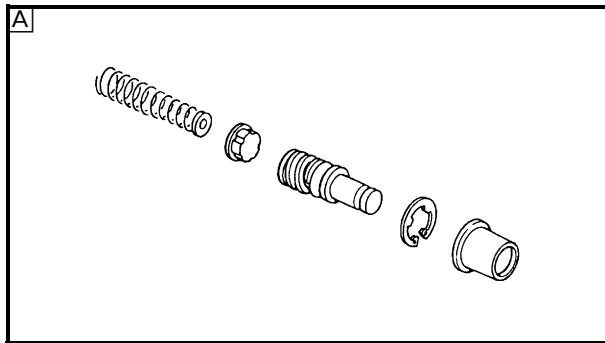
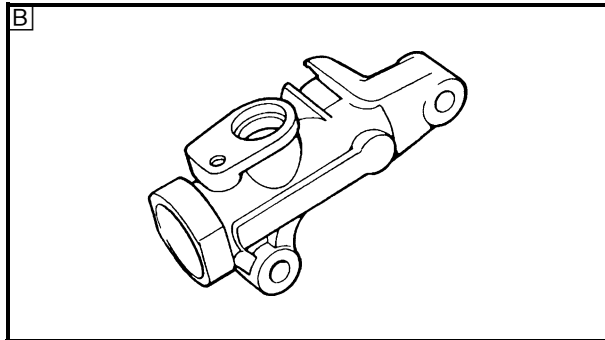
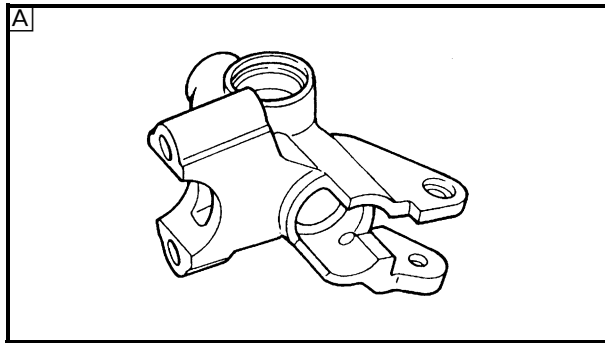
EAS00589

DISASSEMBLING THE REAR BRAKE MASTER CYLINDER

1. Remove:
 - union bolt ①
 - copper washers ②
 - brake hose ③

NOTE: _____

To collect any remaining brake fluid, place a container under the master cylinder and the end of the brake hose.



EAS00593

CHECKING THE FRONT AND REAR BRAKE MASTER CYLINDERS

The following procedure applies to both of the brake master cylinders.

1. Check:

- brake master cylinder
Damage/scratches/wear → Replace.
- brake fluid delivery passages (brake master cylinder body)
Obstruction → Blow out with compressed air.

A Front

B Rear

2. Check:

- brake master cylinder kit
Damage/scratches/wear → Replace.

A Front

B Rear

3. Check:

- brake fluid reservoir ①
Cracks/damage → Replace.
- brake fluid reservoir diaphragm ②
Cracks/damage → Replace.

A Front

B Rear

4. Check:

- brake hoses
Cracks/damage/wear → Replace.



EAS00607

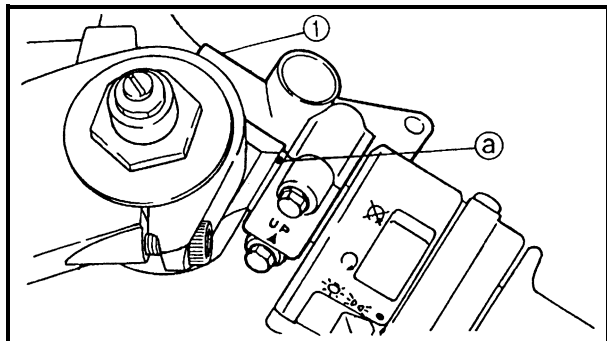
ASSEMBLING AND INSTALLING THE FRONT BRAKE MASTER CYLINDER

⚠ WARNING

- Before installation, all internal brake components should be cleaned and lubricated with clean or new brake fluid.
- Never use solvents on internal brake components.



Recommended brake fluid
DOT 4



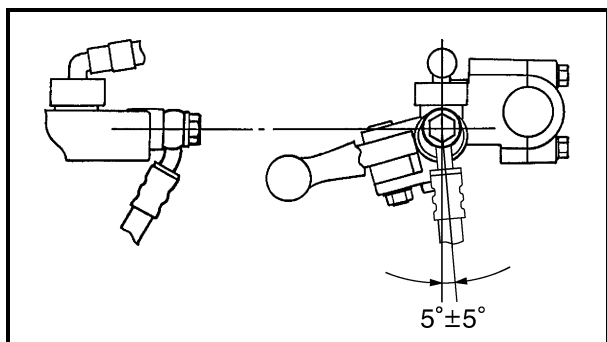
1. Install:

- brake master cylinder ①

9 Nm (0.9 m · kg, 6.5 ft · lb)

NOTE:

- Install the brake master cylinder holder with the “UP” mark facing up.
- Align the end of the brake master cylinder holder with the punch mark (a) on the right handlebar.
- First, tighten the upper bolt, then the lower bolt.



2. Install:

- copper washers **New**
- brake hose
- union bolt

30 Nm (3.0 m · kg, 22 ft · lb)

⚠ WARNING

Proper brake hose routing is essential to insure safe motorcycle operation. Refer to “CABLE ROUTING” in chapter 2.

NOTE:

- While holding the brake hose, tighten the union bolt as shown.
- Turn the handlebars to the left and right to make sure the brake hose does not touch other parts (e.g., wire harness, cables, leads). Correct if necessary.



3. Fill:
 - brake fluid reservoir
(with the specified amount of the recommended brake fluid)



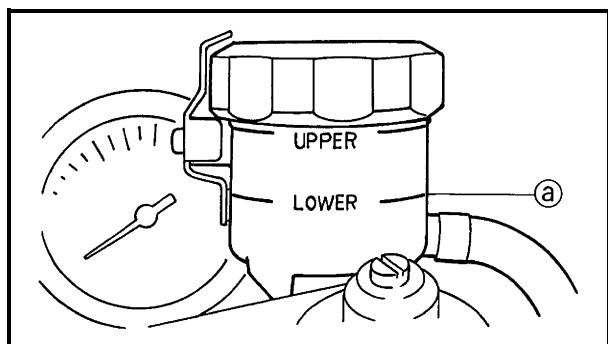
**Recommended brake fluid
DOT 4**

⚠ WARNING

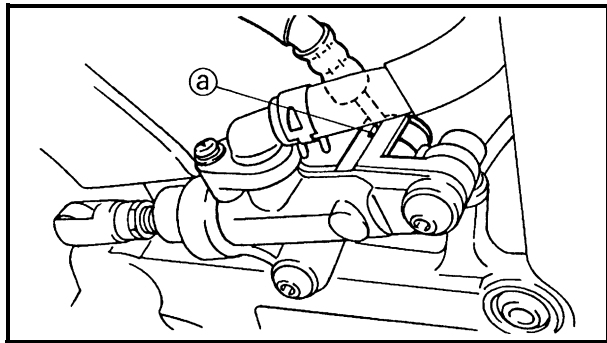
- Use only the designated brake fluid. Other brake fluids may cause the rubber seals to deteriorate, causing leakage and poor brake performance.
- Refill with the same type of brake fluid that is already in the system. Mixing brake fluids may result in a harmful chemical reaction, leading to poor brake performance.
- When refilling, be careful that water does not enter the brake fluid reservoir. Water will significantly lower the boiling point of the brake fluid and could cause vapor lock.

CAUTION:

Brake fluid may damage painted surfaces and plastic parts. Therefore, always clean up any spilt brake fluid immediately.



4. Bleed:
 - brake system
Refer to “BLEEDING THE HYDRAULIC BRAKE SYSTEM” in chapter 3.
5. Check:
 - brake fluid level
Below the minimum level mark (a) → Add the recommended brake fluid to the proper level.
Refer to “CHECKING THE BRAKE FLUID LEVEL” in chapter 3.
6. Check:
 - brake lever operation
Soft or spongy feeling → Bleed the brake system.
Refer to “BLEEDING THE HYDRAULIC BRAKE SYSTEM” in chapter 3.



EAS00610

ASSEMBLING THE REAR BRAKE MASTER CYLINDER

1. Install:

- copper washers **New**
- brake hose
- union bolt **30 Nm (3.0 m · kg, 22 ft · lb)**

CAUTION: _____

When installing the brake hose onto the brake master cylinder, make sure that the brake pipe touches the projection (a) on the brake master cylinder.

⚠ WARNING _____

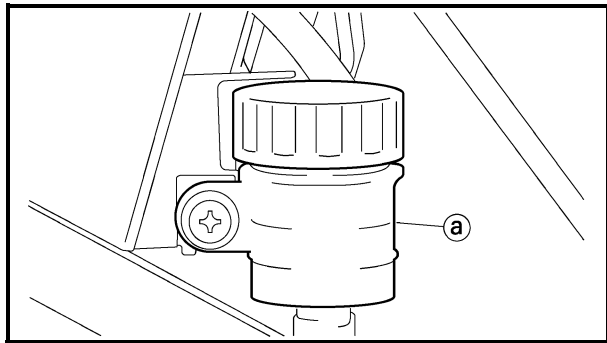
Proper brake hose routing is essential to insure safe motorcycle operation. Refer to “CABLE ROUTING” in chapter 2.

2. Fill:

- brake fluid reservoir (to the maximum level mark (a))



**Recommended brake fluid
DOT 4**



⚠ WARNING _____

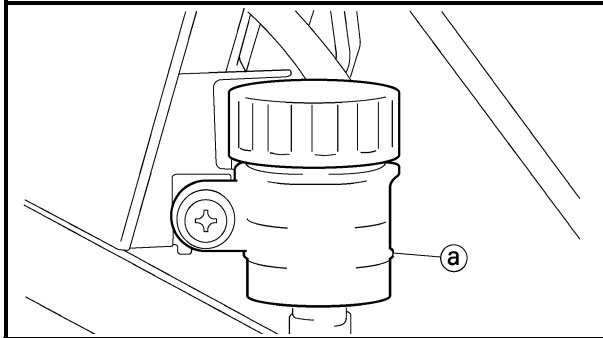
- Use only the designated brake fluid. Other brake fluids may cause the rubber seals to deteriorate, causing leakage and poor brake performance.
- Refill with the same type of brake fluid that is already in the system. Mixing brake fluids may result in a harmful chemical reaction, leading to poor brake performance.
- When refilling, be careful that water does not enter the brake fluid reservoir. Water will significantly lower the boiling point of the brake fluid and could cause vapor lock.

CAUTION: _____

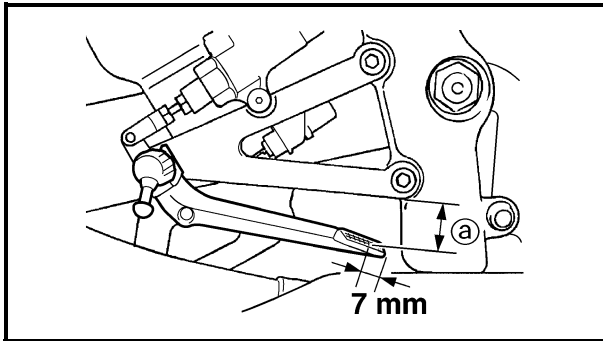
Brake fluid may damage painted surfaces and plastic parts. Therefore, always clean up any spilt brake fluid immediately.



3. Bleed:
 - brake system
Refer to “BLEEDING THE HYDRAULIC BRAKE SYSTEM” in chapter 3.



4. Check:
 - brake fluid level
Below the minimum level mark (a) → Add the recommended brake fluid to the proper level.
Refer to “CHECKING THE BRAKE FLUID LEVEL” in chapter 3.



5. Adjust:
 - brake pedal position (a)
Refer to “ADJUSTING THE REAR BRAKE” in chapter 3.



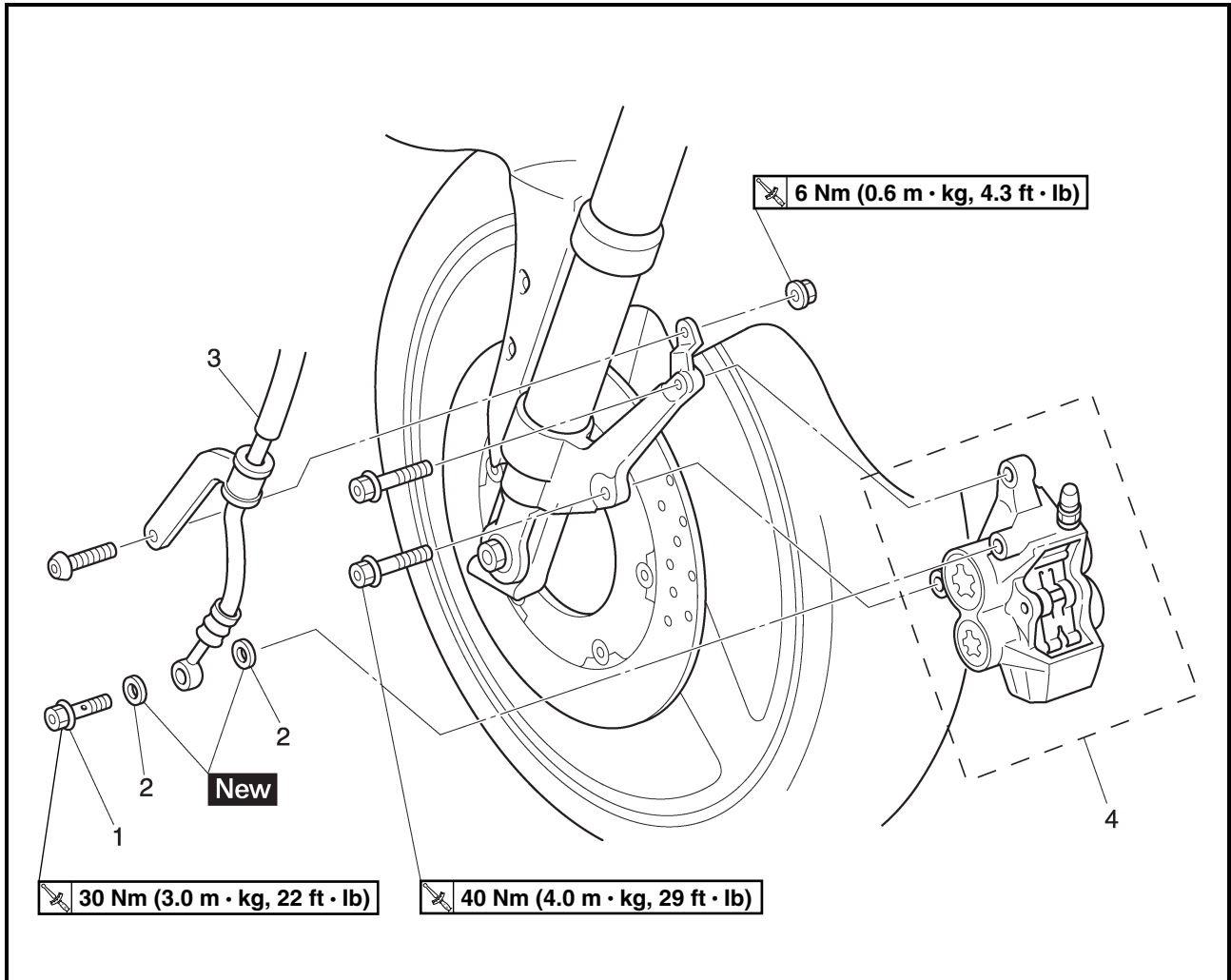
**Brake pedal position
(from the top of the brake pedal to
the bottom of the rider footrest
bracket)
38 ~ 42 mm (1.50 ~ 1.65 in)**

6. Adjust:
 - rear brake light operation timing
Refer to “ADJUSTING THE REAR BRAKE LIGHT SWITCH” in chapter 3.



EAS00613

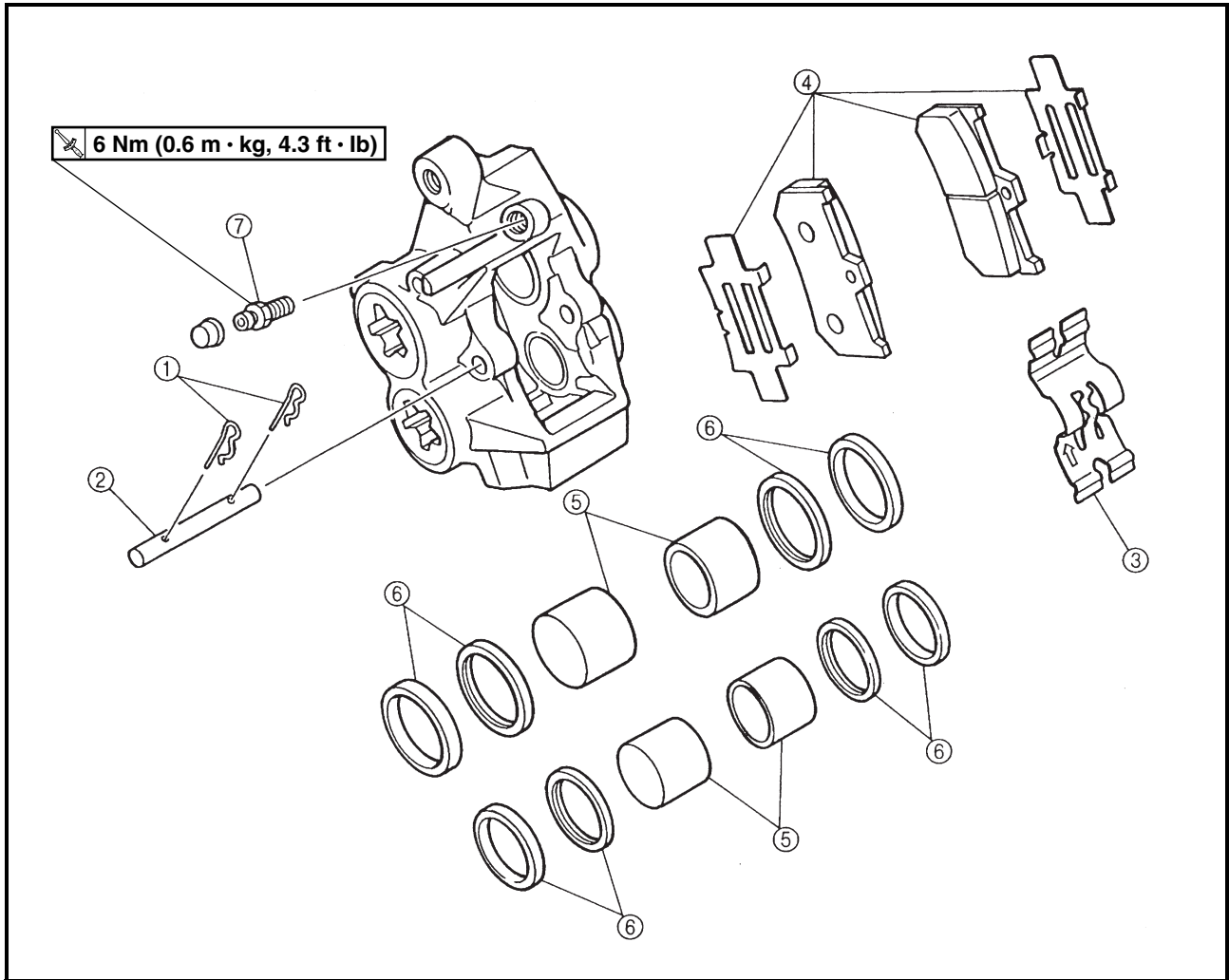
FRONT BRAKE CALIPERS



Order	Job/Part	Q'ty	Remarks
	Removing the front brake calipers		Remove the parts in the order listed. The following procedure applies to both of the front brake calipers. Drain.
1	Brake fluid		
1	Union bolt	1	
2	Copper washer	2	
3	Brake hose	1	
4	Brake caliper	1	
			For installation, reverse the removal procedure.



EAS00615

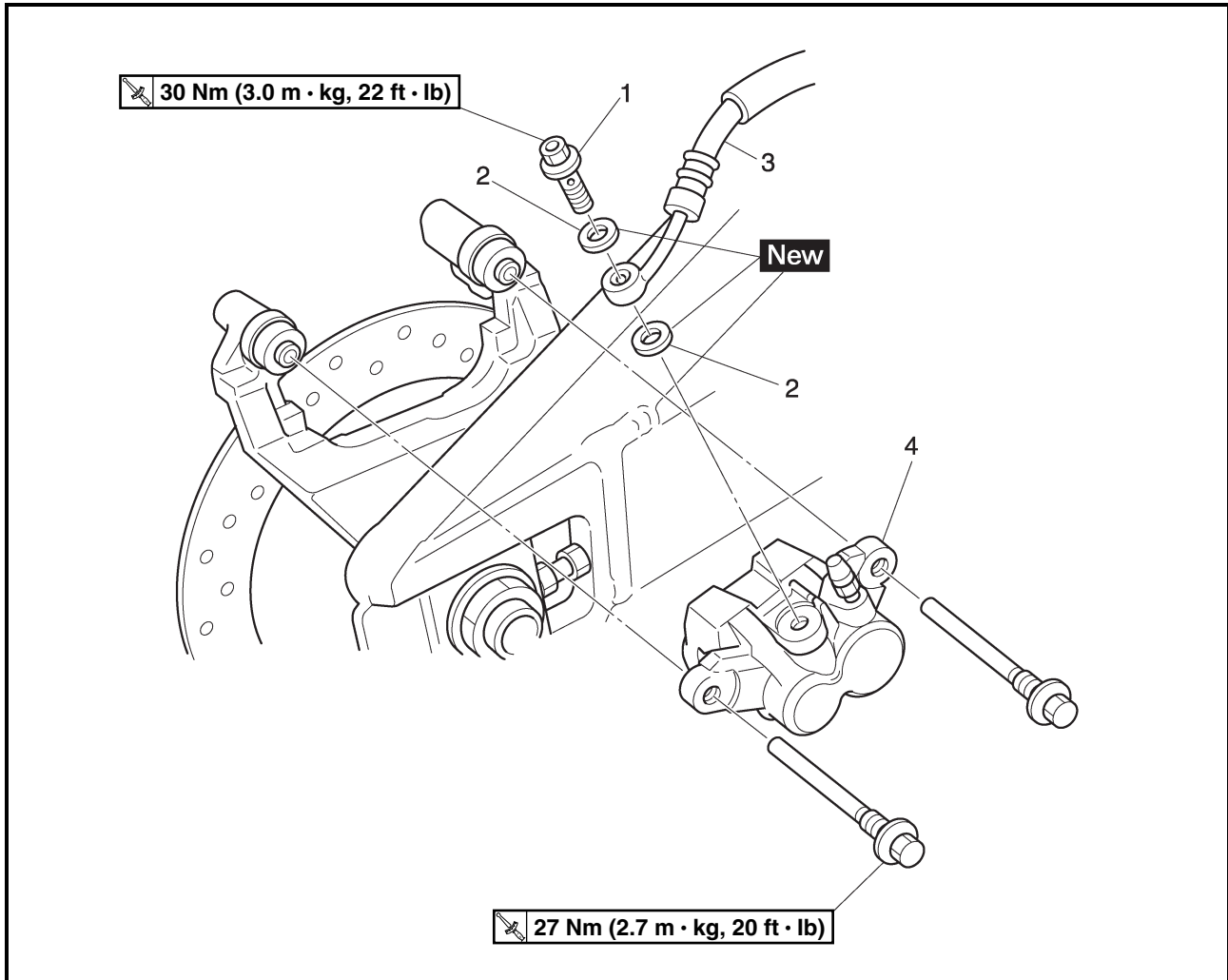


Order	Job/Part	Q'ty	Remarks
	Disassembling the front brake calipers		Remove the parts in the order listed.
			The following procedure applies to both of the front brake calipers.
①	Brake pad clip	2	
②	Brake pad pin	1	
③	Brake pad spring	1	
④	Brake pad	2	
⑤	Brake caliper piston	4	
⑥	Brake caliper piston seal	8	
⑦	Bleed screw	1	
			For assembly, reverse the disassembly procedure.



EAS00616

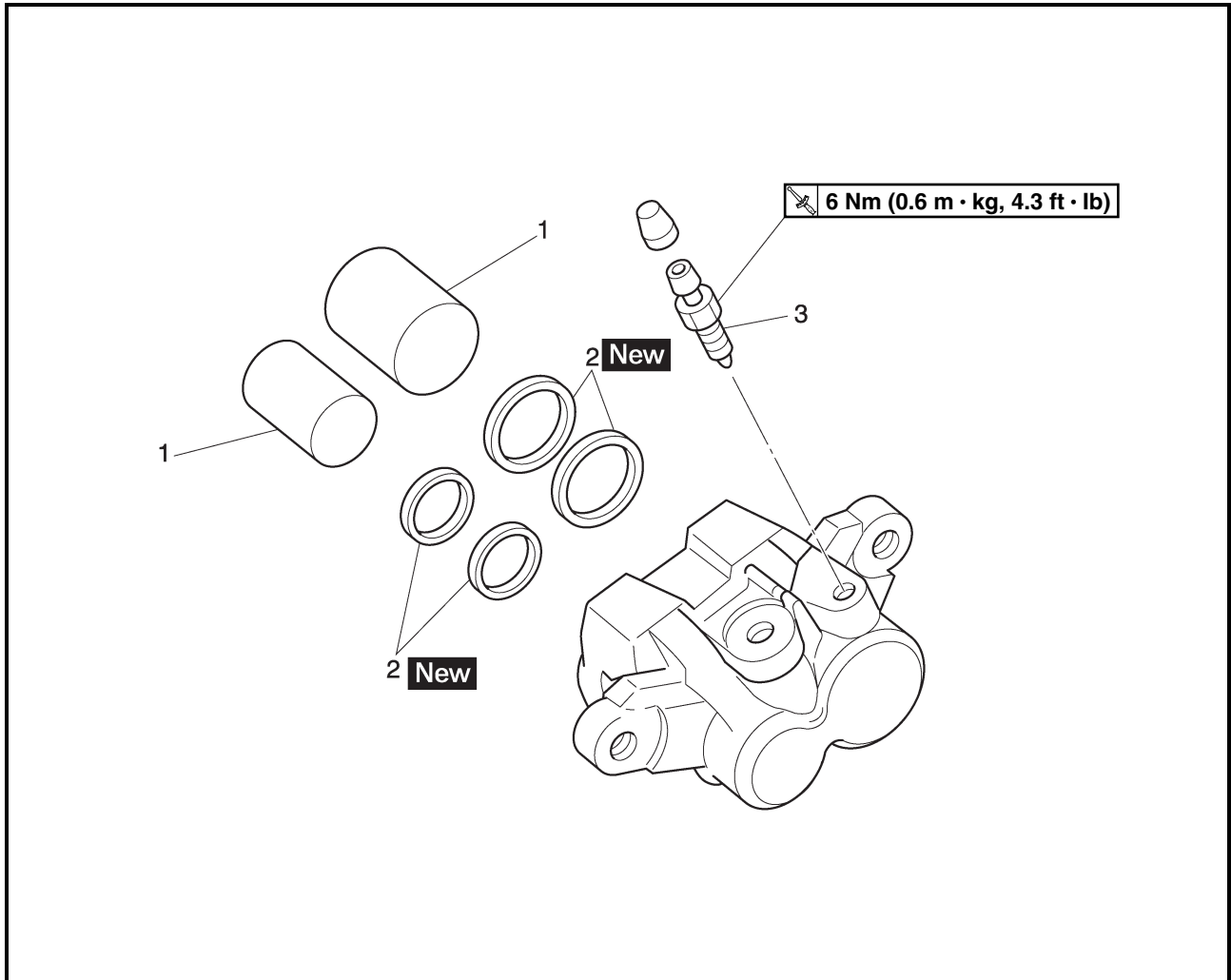
REAR BRAKE CALIPER



Order	Job/Part	Q'ty	Remarks
	Removing the rear brake caliper		Remove the parts in the order listed.
	Brake fluid		Drain.
1	Union bolt	1	
2	Copper washer	2	
3	Brake hose	1	
4	Brake caliper	1	
			For installation, reverse the removal procedure.



EAS00617

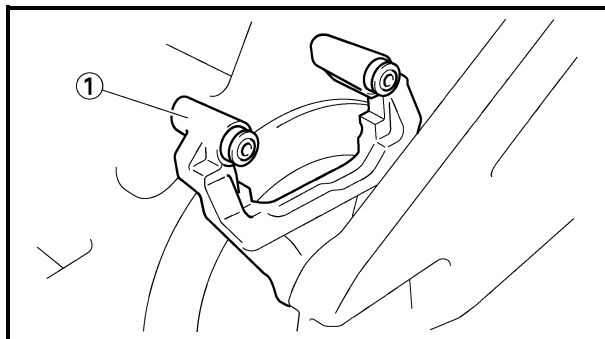
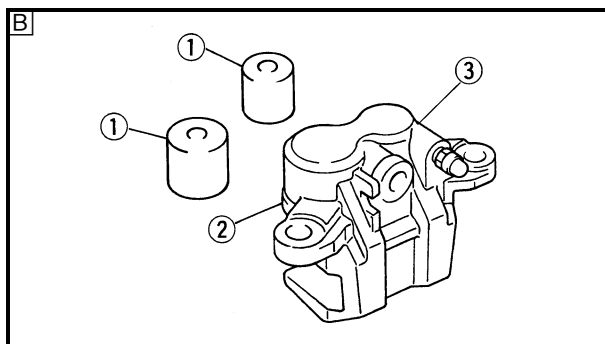
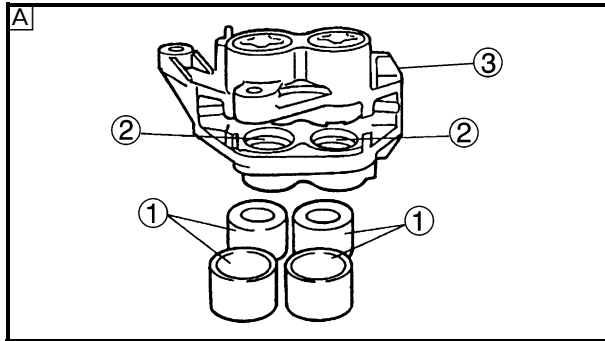


Order	Job/Part	Q'ty	Remarks
	Disassembling the rear brake caliper		Remove the parts in the order listed.
1	Brake caliper piston	2	
2	Brake caliper piston seal	4	
3	Bleed screw	1	
			For assembly, reverse the disassembly procedure.

EAS00633

CHECKING THE FRONT AND REAR BRAKE CALIPERS

Recommended brake component replacement schedule	
Brake pads	If necessary
Piston seals	Every two years
Brake hoses	Every four years
Brake fluid	Every two years and whenever the brake is disassembled



1. Check:

- brake caliper pistons ①
Rust/scratches/wear → Replace the brake caliper pistons.
- brake caliper cylinders ②
Scratches/wear → Replace the brake caliper assembly.
- brake caliper body ③
Cracks/damage → Replace the brake caliper assembly.
- brake fluid delivery passages (brake caliper body)
Obstruction → Blow out with compressed air.

⚠ WARNING

Whenever a brake caliper is disassembled, replace the brake caliper piston seals.

Ⓐ Front

Ⓑ Rear

2. Check:

- brake caliper brackets ①
Cracks/damage → Replace.

EAS00640

ASSEMBLING AND INSTALLING THE FRONT BRAKE CALIPERS

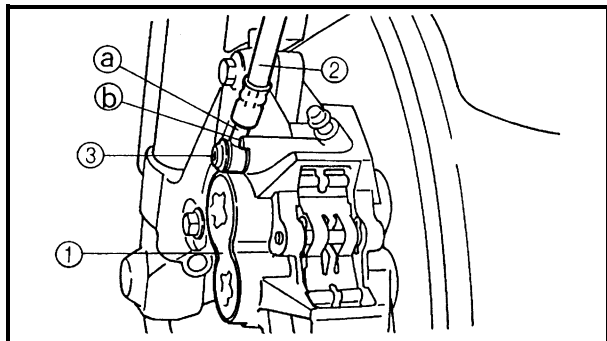
The following procedure applies to both of the brake calipers.

⚠ WARNING


- Before installation, all internal brake components should be cleaned and lubricated with clean or new brake fluid.
- Never use solvents on internal brake components as they will cause the piston seals to swell and distort.
- Whenever a brake caliper is disassembled, replace the brake caliper piston seals.



Recommended brake fluid
DOT 4



1. Install:

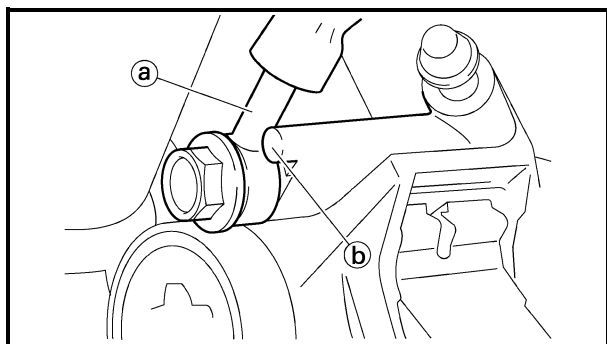
- brake caliper ① (temporarily)
- copper washers **New**
- brake hose ②
- union bolt ③  30 Nm (3.0 m · kg, 22 ft · lb)

⚠ WARNING

Proper brake hose routing is essential to insure safe motorcycle operation. Refer to “CABLE ROUTING” in chapter 2.

CAUTION:


When installing the brake hose onto the brake caliper, make sure the brake pipe ① touches the projection ② on the brake caliper.




2. Remove:

- brake caliper

3. Install:

- brake pads
- brake pad spring
- brake caliper  40 Nm (4.0 m · kg, 29 ft · lb)
- brake hose holder

 6 Nm (0.6 m · kg, 4.3 ft · lb)



4. Fill:
 - brake fluid reservoir
(with the specified amount of the recommended brake fluid)



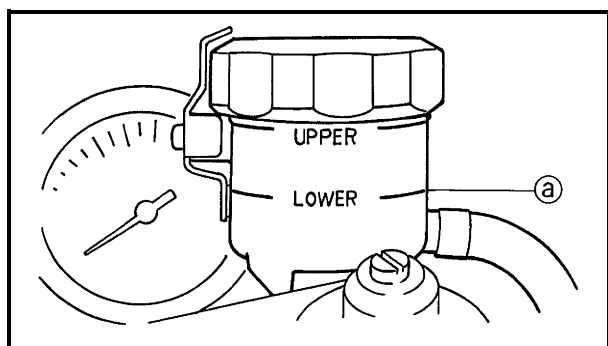
**Recommended brake fluid
DOT 4**

⚠ WARNING

- **Use only the designated brake fluid. Other brake fluids may cause the rubber seals to deteriorate, causing leakage and poor brake performance.**
- **Refill with the same type of brake fluid that is already in the system. Mixing brake fluids may result in a harmful chemical reaction, leading to poor brake performance.**
- **When refilling, be careful that water does not enter the brake fluid reservoir. Water will significantly lower the boiling point of the brake fluid and could cause vapor lock.**

CAUTION:

Brake fluid may damage painted surfaces and plastic parts. Therefore, always clean up any spilt brake fluid immediately.



5. Bleed:
 - brake system
Refer to “BLEEDING THE HYDRAULIC BRAKE SYSTEM” in chapter 3.
6. Check:
 - brake fluid level
Below the minimum level mark (a) → Add the recommended brake fluid to the proper level.
Refer to “CHECKING THE BRAKE FLUID LEVEL” in chapter 3.
7. Check:
 - brake lever operation
Soft or spongy feeling → Bleed the brake system.
Refer to “BLEEDING THE HYDRAULIC BRAKE SYSTEM” in chapter 3.

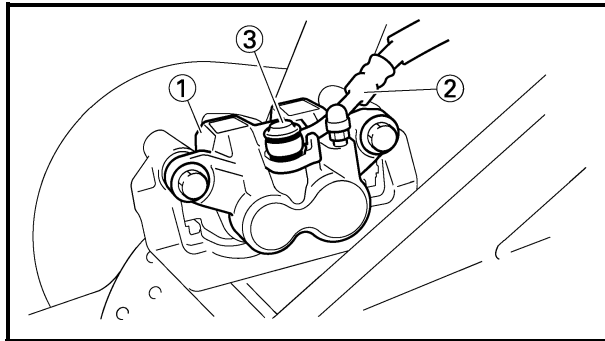
ASSEMBLING AND INSTALLING THE REAR BRAKE CALIPER

⚠ WARNING

- Before installation, all internal brake components should be cleaned and lubricated with clean or new brake fluid.
- Never use solvents on internal brake components as they will cause the piston seals to swell and distort.
- Whenever a brake caliper is disassembled, replace the brake caliper piston seals.




Recommended brake fluid
DOT 4



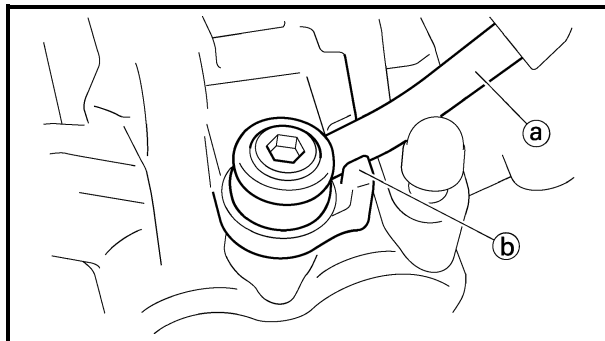
1. Install:

- brake caliper ① (temporarily)
- copper washers **New**
- brake hose ②
- union bolt ③

 30 Nm (3.0 m · kg, 22 ft · lb)

⚠ WARNING

Proper brake hose routing is essential to insure safe motorcycle operation. Refer to “CABLE ROUTING” in chapter 2.



CAUTION:


When installing the brake hose onto the brake caliper, make sure that the brake pipe ① touches the projection ② on the brake caliper.


2. Remove:

- brake caliper

3. Install:

- brake pads
- brake pad springs
- brake caliper
- brake hose holder

 27 Nm (2.7 m · kg, 20 ft · lb)

 7 Nm (0.7 m · kg, 5.1 ft · lb)

Refer to “REPLACING THE REAR BRAKE PADS”.



4. Fill:
 - brake fluid reservoir
(with the specified amount of the recommended brake fluid)



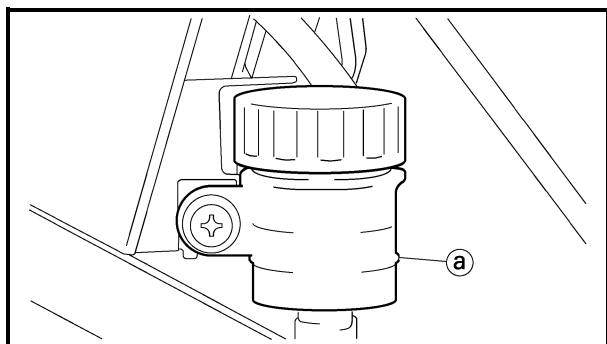
**Recommended brake fluid
DOT 4**

⚠ WARNING

- **Use only the designated brake fluid. Other brake fluids may cause the rubber seals to deteriorate, causing leakage and poor brake performance.**
- **Refill with the same type of brake fluid that is already in the system. Mixing brake fluids may result in a harmful chemical reaction, leading to poor brake performance.**
- **When refilling, be careful that water does not enter the brake fluid reservoir. Water will significantly lower the boiling point of the brake fluid and could cause vapor lock.**

CAUTION:

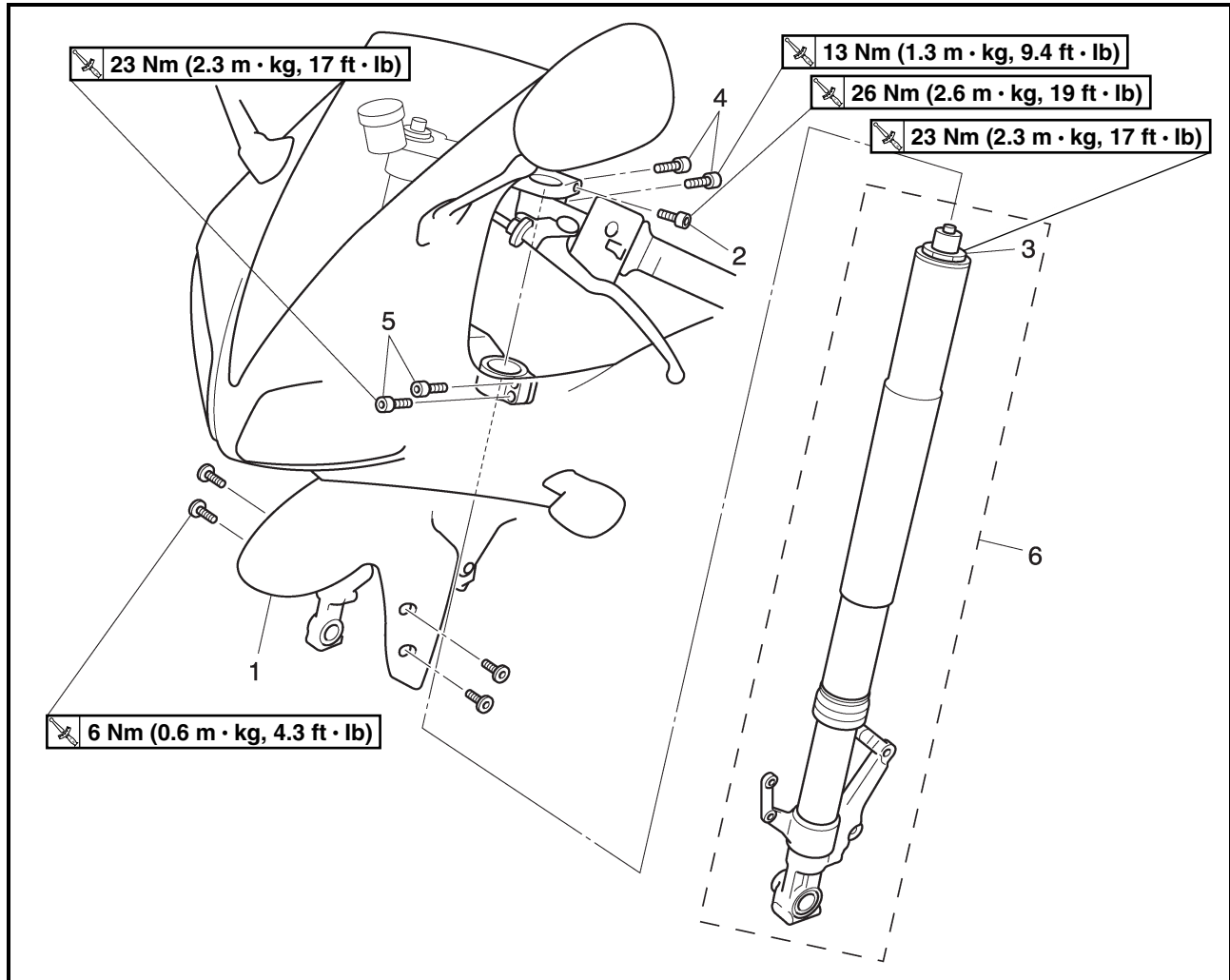
Brake fluid may damage painted surfaces and plastic parts. Therefore, always clean up any spilt brake fluid immediately.



5. Bleed:
 - brake system
Refer to “BLEEDING THE HYDRAULIC BRAKE SYSTEM” in chapter 3.
6. Check:
 - brake fluid level
Below the minimum level mark (a) → Add the recommended brake fluid to the proper level.
Refer to “CHECKING THE BRAKE FLUID LEVEL” in chapter 3.
7. Check:
 - brake pedal operation
Soft or spongy feeling → Bleed the brake system.
Refer to “BLEEDING THE HYDRAULIC BRAKE SYSTEM” in chapter 3.

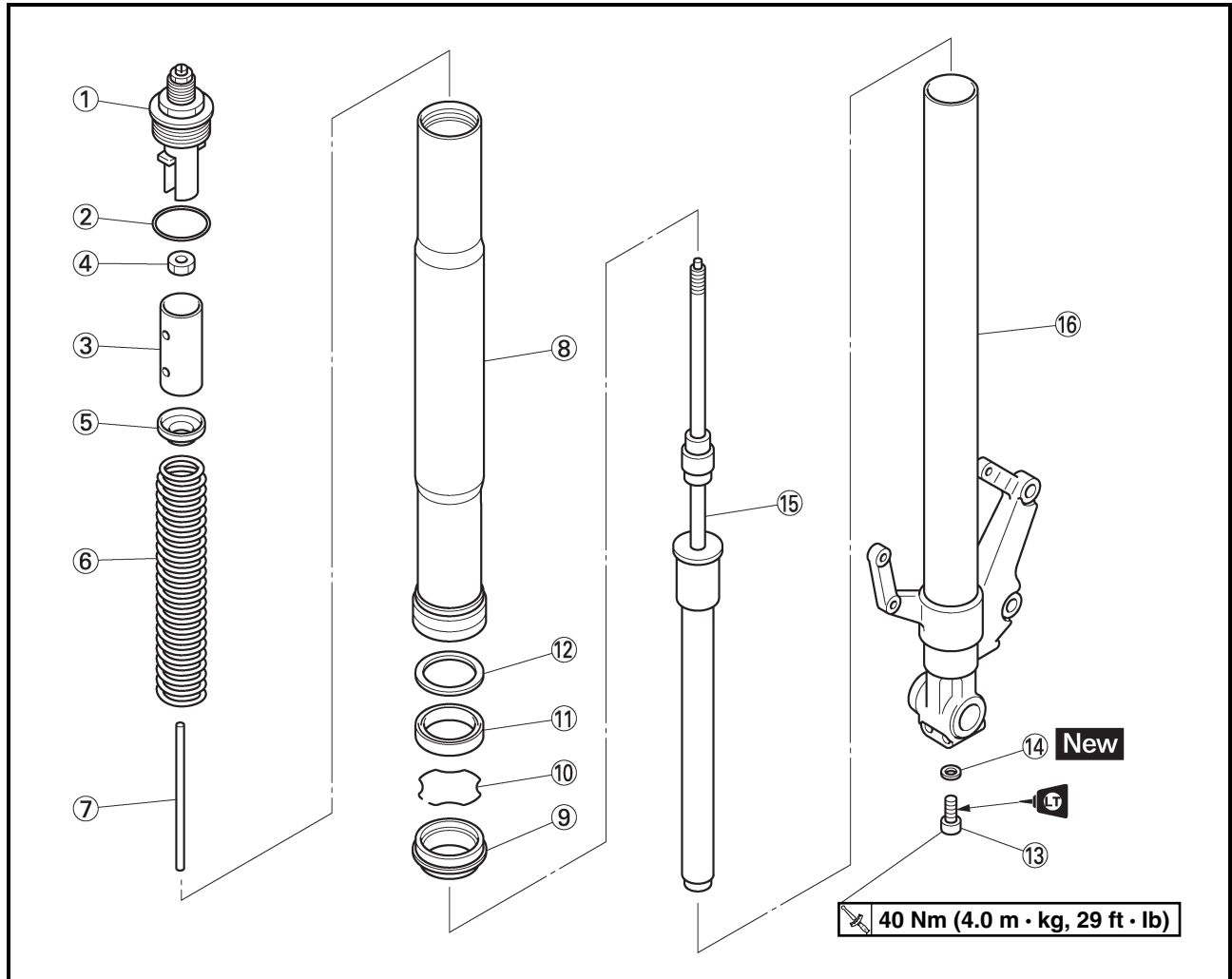
EAS00647

FRONT FORK

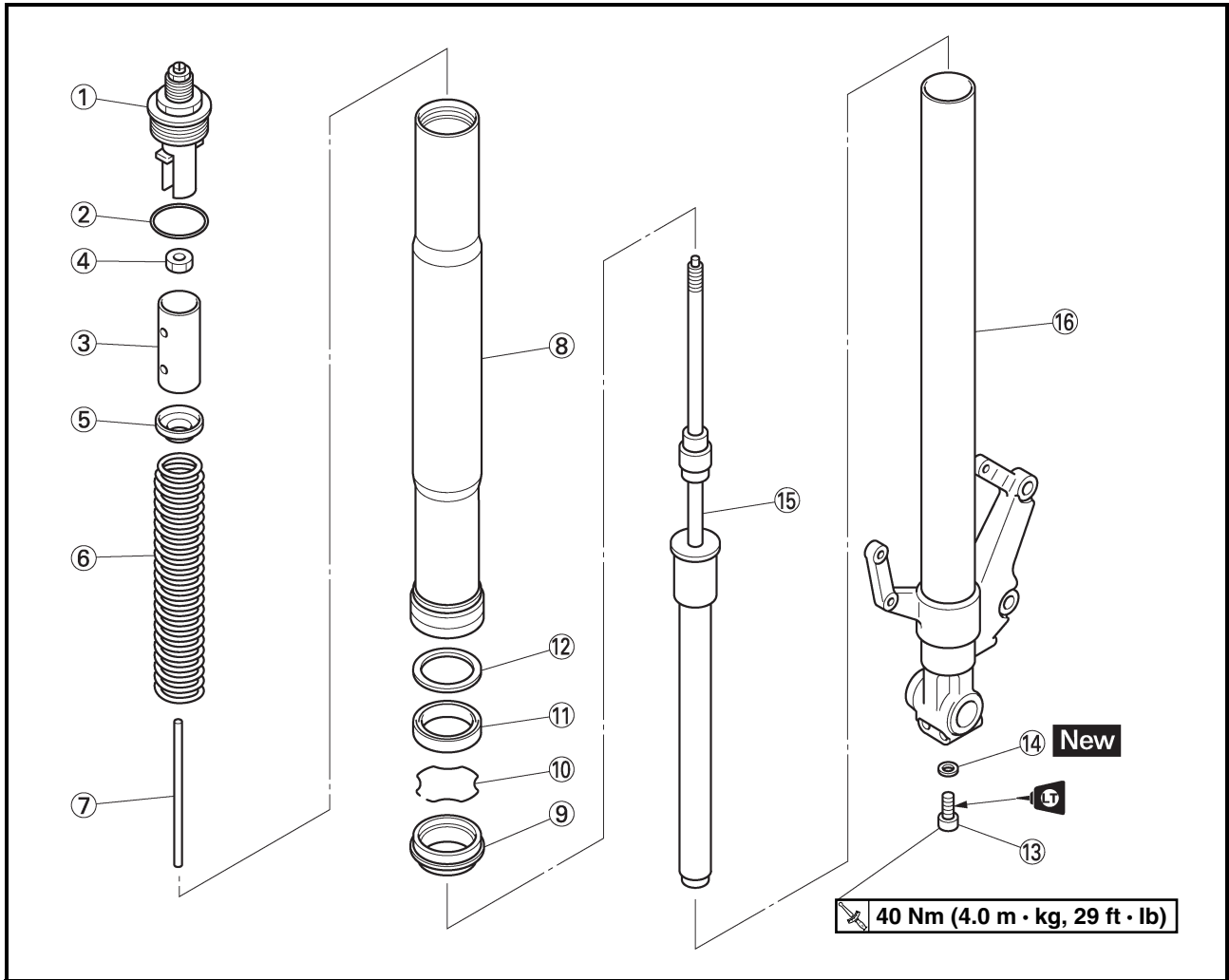


Order	Job/Part	Q'ty	Remarks
	Removing the front fork legs		Remove the parts in the order listed.
	Front wheel		Refer to "FRONT WHEEL AND BRAKE DISCS".
	Front cowling inner panels		Refer to "COWLINGS" in chapter 3.
1	Front fender	1	
2	Upper bracket pinch bolt	1	Loosen.
3	Cap bolt	1	Loosen.
4	Handlebar pinch bolt	2	Loosen.
5	Lower bracket pinch bolt	2	Loosen.
6	Front fork leg	1	
			For installation, reverse the removal procedure.

EAS00648



Order	Job/Part	Q'ty	Remarks
	Disassembling the front fork legs		Remove the parts in the order listed.
①	Cap bolt	1	
②	O-ring	1	
③	Spacer	1	
④	Nut	1	
⑤	Spring seat	1	
⑥	Fork spring	1	
⑦	Damper adjusting rod	1	
⑧	Outer tube	1	
⑨	Dust seal	1	
⑩	Oil seal clip	1	
⑪	Oil seal	1	
⑫	Washer	1	



Order	Job/Part	Q'ty	Remarks
⑬	Damper rod assembly bolt	1	For assembly, reverse the disassembly procedure.
⑭	Copper washer	1	
⑮	Damper rod assembly	1	
⑯	Inner tube	1	



Fork spring compressor
YM-01441
Rod holder
YM-01434

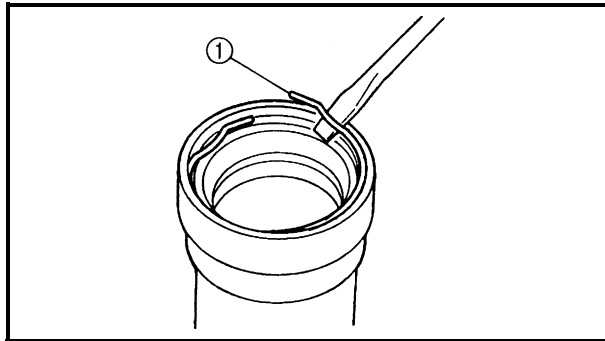
NOTE: _____
 Use the side of the rod holder that is marked "B".

- c. Loosen the nut.
- d. Remove the cap bolt.
- e. Remove the rod holder and fork spring compressor.

⚠ WARNING _____

The fork spring is compressed.

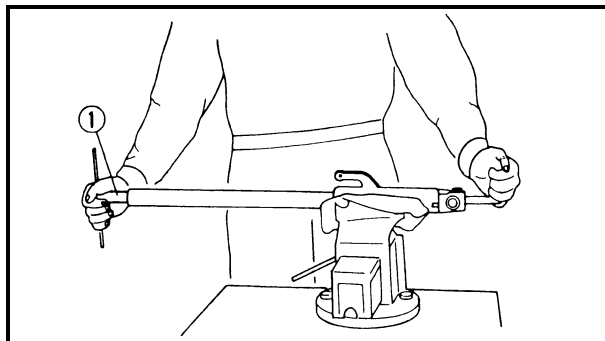
- f. Remove the spacer and nut.



- 2. Remove:
 - dust seal
 - oil seal clip ①
 - oil seal
 - washer (with a flat-head screwdriver)

CAUTION: _____

Do not scratch the inner tube.

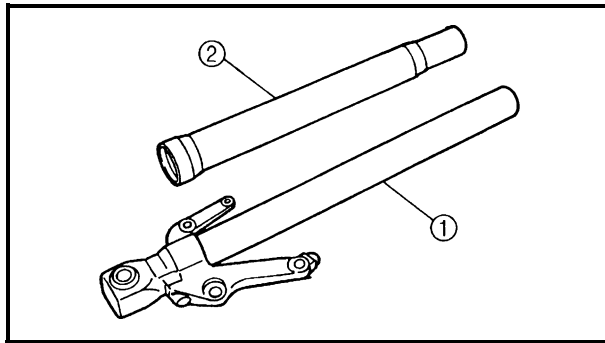


- 3. Remove:
 - damper rod assembly bolt

NOTE: _____
 While holding the damper rod assembly with the damper rod holder ①, loosen the damper rod assembly bolt.



Damper rod holder
YM-1423



EAS00656

CHECKING THE FRONT FORK LEGS

The following procedure applies to both of the front fork legs.

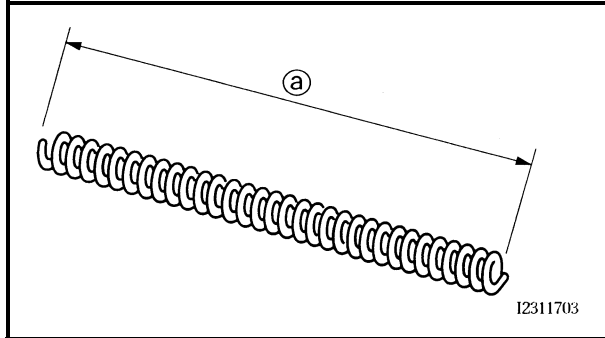
1. Check:

- inner tube ①
- outer tube ②

Bends/damage/scratches → Replace.

⚠ WARNING

Do not attempt to straighten a bent inner tube as this may dangerously weaken it.



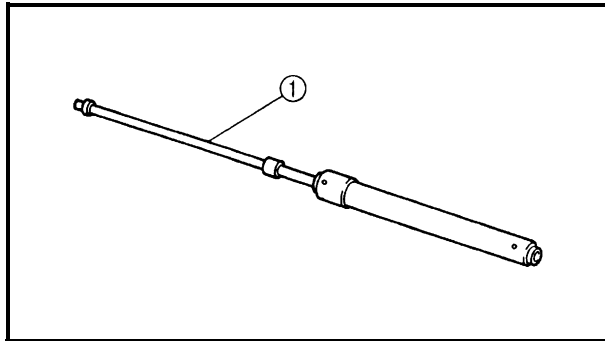
2. Measure:

- spring free length ①

Out of specification → Replace.



Spring free length
246 mm (9.69 in)



3. Check:

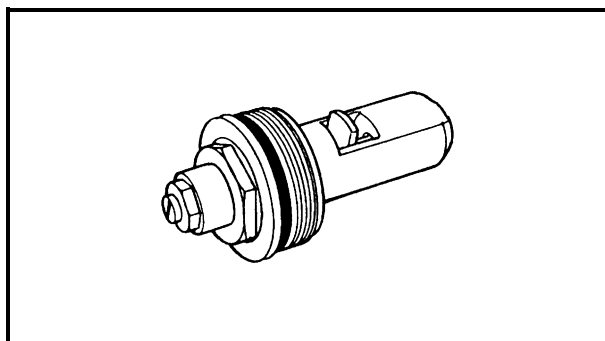
- damper rod ①

Damage/wear → Replace.

- obstruction → Blow out all of the oil passages with compressed air.

CAUTION:

- **The front fork leg has a built-in damper adjusting rod and a very sophisticated internal construction, which are particularly sensitive to foreign material.**
- **When disassembling and assembling the front fork leg, do not allow any foreign material to enter the front fork.**



4. Check:

- cap bolt O-ring

Damage/wear → Replace.



EAS00659

ASSEMBLING THE FRONT FORK LEGS

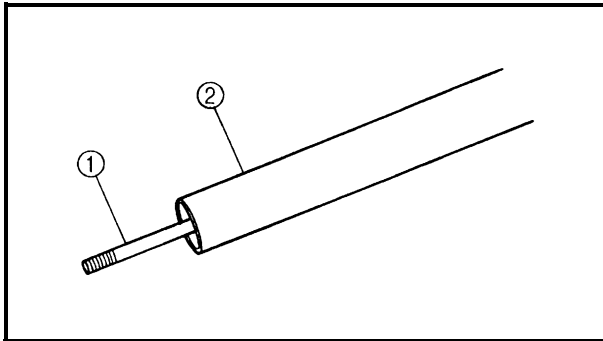
The following procedure applies to both of the front fork legs.

⚠ WARNING

- Make sure the oil levels in both front fork legs are equal.
- Uneven oil levels can result in poor handling and a loss of stability.

NOTE:

- When assembling the front fork leg, be sure to replace the following parts:
 - oil seal
 - dust seal
- Before assembling the front fork leg, make sure all of the components are clean.



1. Install:
 - damper rod assembly ①

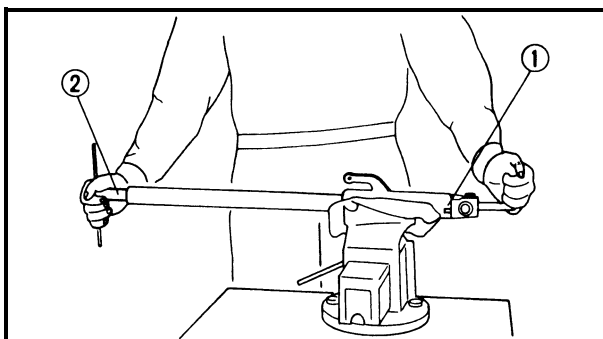
CAUTION:

Allow the damper rod assembly to slide slowly down the inner tube ② until it protrudes from the bottom of the inner tube. Be careful not to damage the inner tube.


2. Lubricate:
 - inner tube's outer surface



Recommended lubricant
Suspension oil "01" or equivalent



3. Tighten:
 - damper rod assembly bolt ①

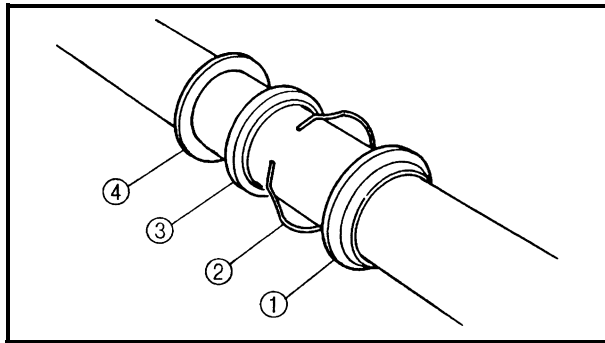
 **40 Nm (4.0 m · kg, 29 ft · lb)** **LOCTITE®**

NOTE:

While holding the damper rod assembly with the damper rod holder ②, tighten the damper rod assembly bolt.



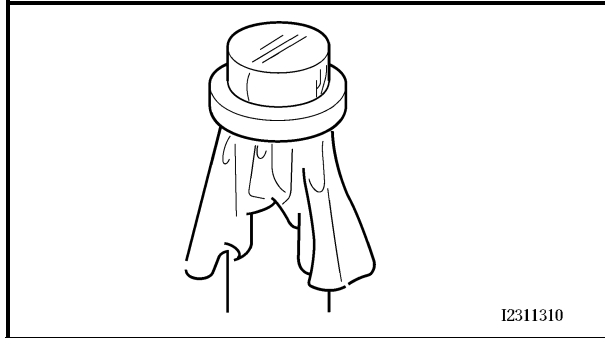
Damper rod holder
YM-1423



4. Install:
- dust seal ①
 - oil seal clip ②
 - oil seal ③
 - washer ④

CAUTION:

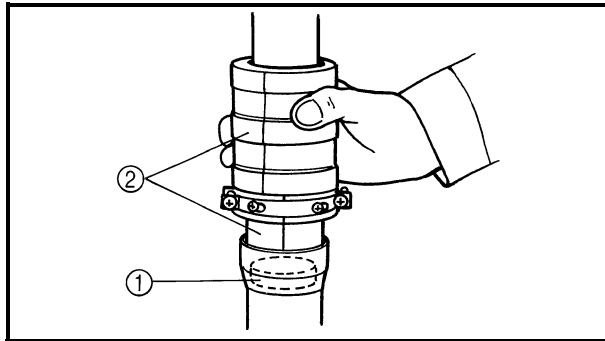
Make sure the numbered side of the oil seal faces out side.



I2311310

NOTE:

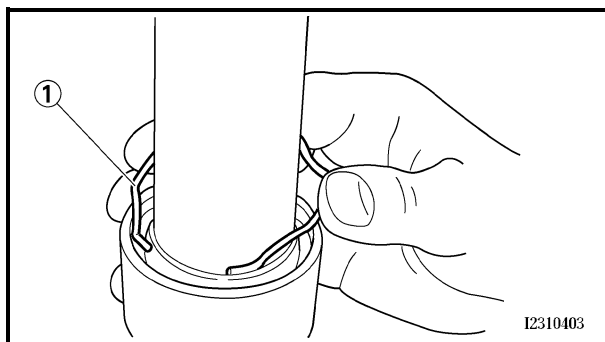
- Before installing the oil seal, lubricate its lips with lithium-soap-based grease.
- Lubricate the outer surface of the inner tube with fork oil.
- Before installing the oil seal, cover the top of the front fork leg with a plastic bag to protect the oil seal during installation.



5. Install:
- oil seal ①
(with the fork seal driver ②)



**Fork seal driver
YM-01442**

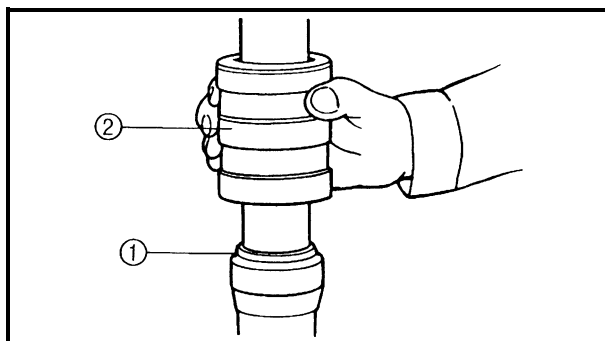


I2310403

6. Install:
- oil seal clip ①

NOTE:

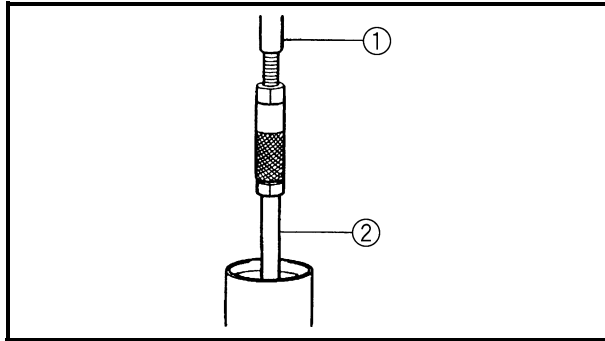
Adjust the oil seal clip so that it fits into the outer tube's groove.



7. Install:
- dust seal ①
(with the fork seal driver ②)



**Fork seal driver
YM-01442**



8. Install:
- rod puller ①
(onto the damper rod ②)

	Rod puller YM-01437
--	--------------------------------------

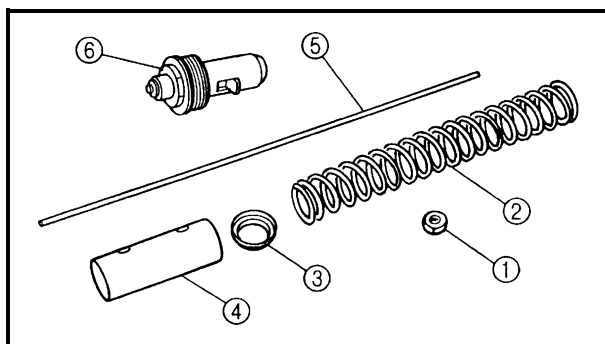
9. Fill:
- front fork leg
(with the specified amount of the recommended fork oil)

	<p>Quantity (each front fork leg) 0.543 L (0.478 Imp qt, 0.574 US qt)</p> <p>Recommended oil Suspension oil "01" or equivalent</p>
--	--

	<p>Front fork leg oil level (from the top of the inner tube, with the inner tube fully compressed and without the fork spring) 88 mm (3.46 in)</p>
--	---

NOTE:

- While filling the front fork leg, keep it upright.
- After filling, slowly pump the front fork leg up and down to distribute the fork oil.



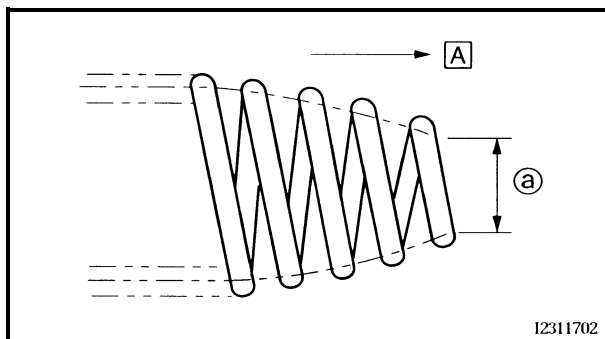
10. Install:
- nut ①
 - fork spring ②
 - spring seat ③
 - spacer ④
 - damper adjusting rod ⑤
 - cap bolt ⑥



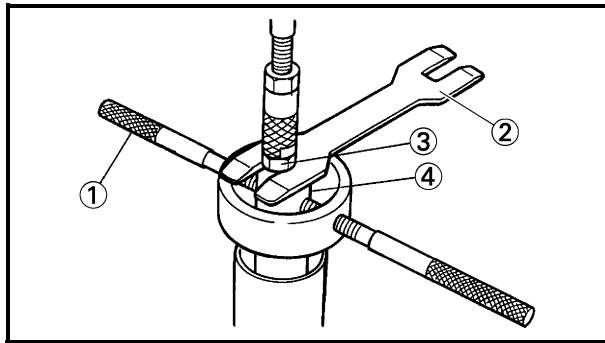
- a. Remove the rod puller and adapter.
- b. Install the nut.
- c. Install the fork spring, spring seat, and spacer.

NOTE:

Install the spring with the smaller pitch ① facing up A.



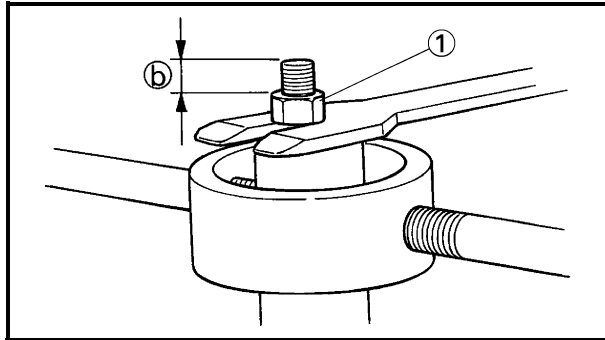
12311702



- d. Press down on the spacer with the fork spring compressor ①.
- e. Pull up the rod puller and install the rod holder ② between the nut ③ and the spacer ④.

NOTE:

Use the side of the rod holder that is marked "B".

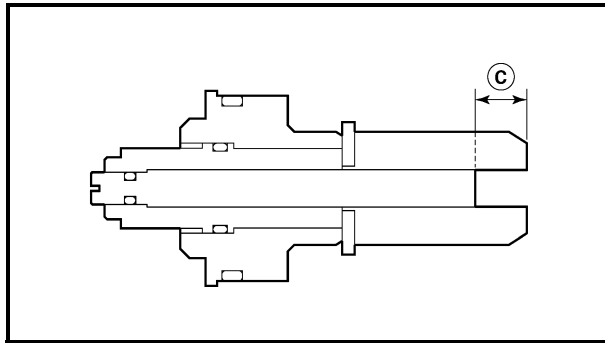


Fork spring compressor
YM-01441
Rod holder
YM-01434

- f. Remove the rod puller and adapter.
- g. Install the nut ① and position it as specified ⑥.



Distance ⑥
11 mm (0.43 in)



Distance ③
13 mm (0.51 in)

- h. Set the cap bolt distance ③ to specification.

- i. Install the damper adjusting rod and cap bolt, and then finger tighten the cap bolt.
- j. Hold the cap bolt and tighten the nut to specification.



Nut
15 Nm (1.5 m · kg, 11 ft · lb)

- k. Remove the rod holder and fork spring compressor.

⚠ WARNING

- The fork spring is compressed.
- Always use a new cap bolt O-ring.





EAS00662

INSTALLING THE FRONT FORK LEGS

The following procedure applies to both of the front fork legs.

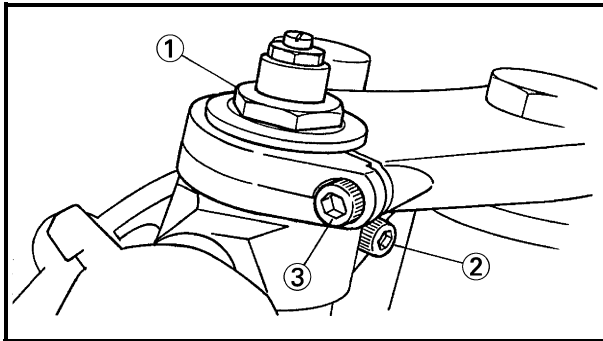
1. Install:

- front fork leg

Temporarily tighten the upper and lower bracket pinch bolts.

NOTE:

Make sure the inner fork tube is flush with the top of the handlebar holder.



2. Tighten:

- lower bracket pinch bolt

	23 Nm (2.3 m · kg, 17 ft · lb)
--	---------------------------------------

- cap bolt ①

	23 Nm (2.3 m · kg, 17 ft · lb)
--	---------------------------------------

- handlebar boss pinch bolt ②

	13 Nm (1.3 m · kg, 9.4 ft · lb)
--	--

- upper bracket pinch bolt ③

	26 Nm (2.6 m · kg, 19 ft · lb)
--	---------------------------------------

⚠ WARNING

Make sure the brake hoses are routed properly.

3. Adjust:

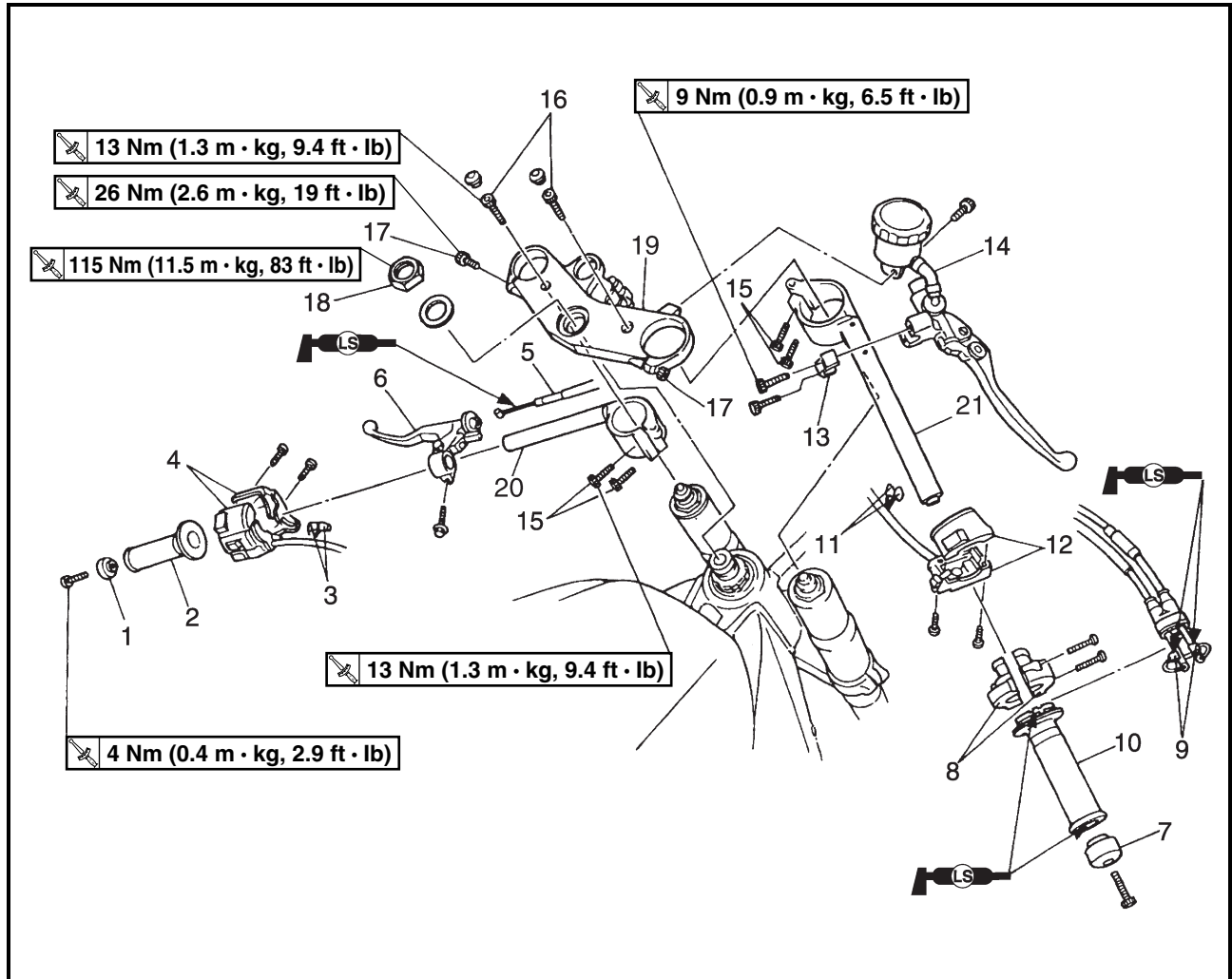
- spring preload
- rebound damping
- compression damping

Refer to “ADJUSTING THE FRONT FORK LEGS” in chapter 3.

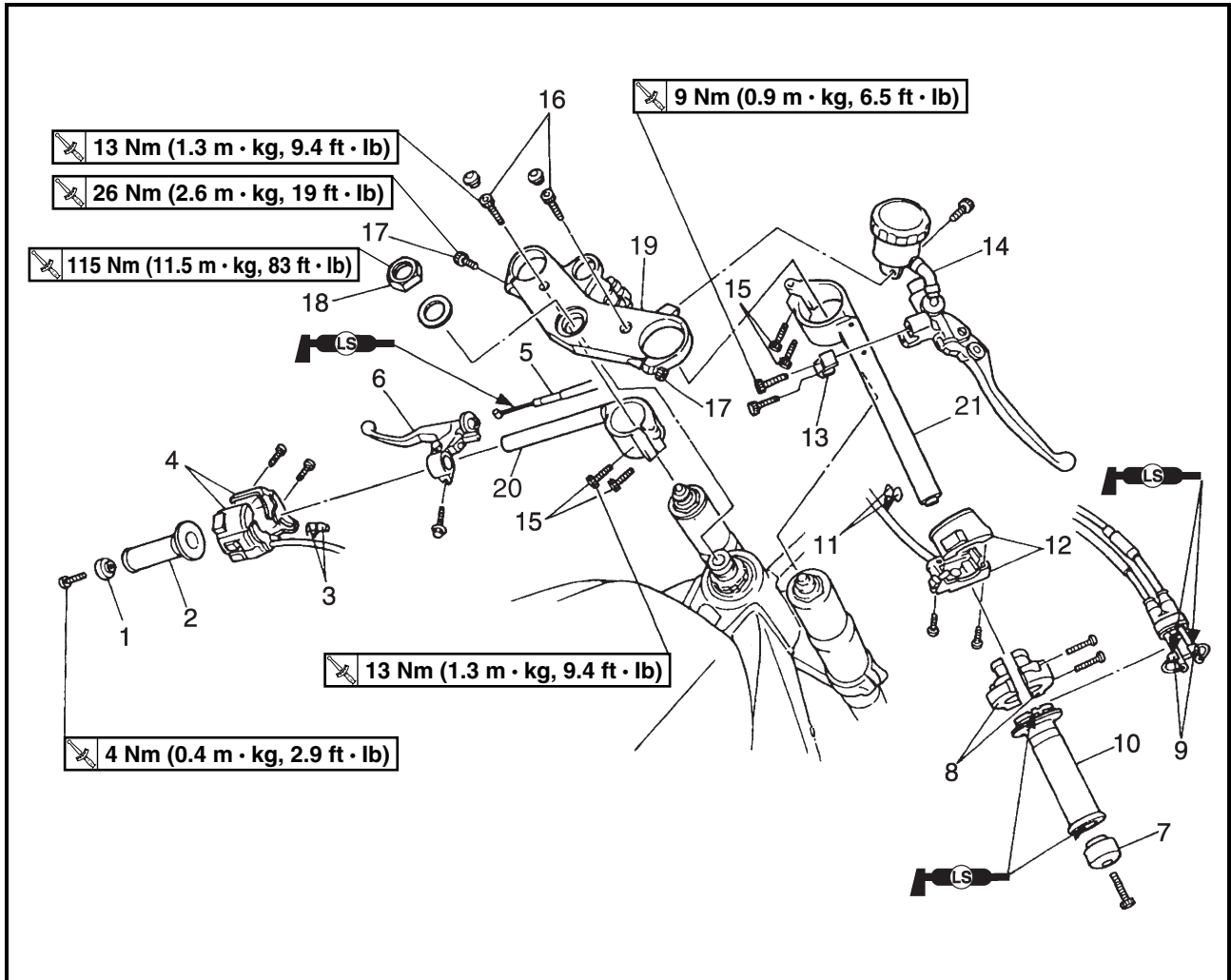


EAS00665

HANDLEBARS



Order	Job/Part	Q'ty	Remarks
	Removing the handlebars		Remove the parts in the order listed.
1	Left grip end	1	
2	Handlebar grip	1	
3	Clutch switch connector	2	Disconnect.
4	Left handlebar switch	1	
5	Clutch cable	1	
6	Clutch lever	1	Disconnect.
7	Right grip end	1	
8	Throttle cable housing	1	
9	Throttle cable	2	
10	Throttle grip	1	



Order	Job/Part	Q'ty	Remarks
11	Front brake switch connector	2	Disconnect.
12	Right handlebar switch	1	
13	Brake master cylinder bracket	1	
14	Brake master cylinder	1	
15	Handlebar pinch bolt	4	
16	Upper bracket bolt	2	
17	Upper bracket pinch bolt	2	
18	Steering stem nut	1	
19	Upper bracket	1	
20	Left handlebar	1	
21	Right handlebar	1	
			For installation, reverse the removal procedure.



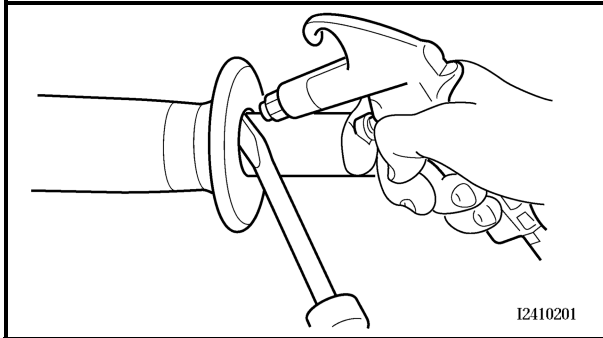
EAS00667

REMOVING THE HANDLEBARS

1. Stand the motorcycle on a level surface.

⚠ WARNING

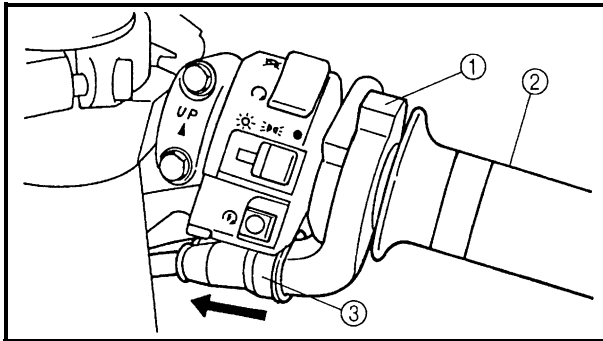
Securely support the motorcycle so that there is no danger of it falling over.



2. Remove:
 - handlebar grip

NOTE:

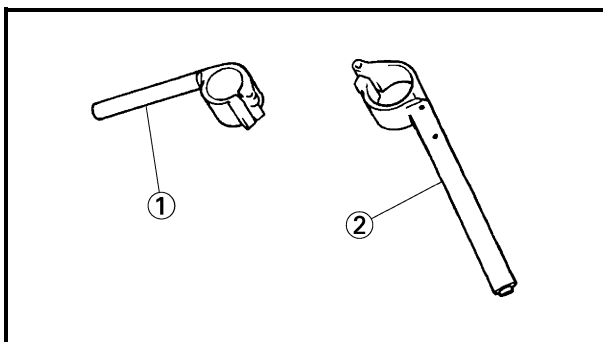
Blow compressed air between the left handlebar and the handlebar grip, and gradually push the grip off the handlebar.



3. Remove:
 - throttle cable housing ①
 - throttle grip ②

NOTE:

While removing the throttle cable housing, pull back the rubber cover ③.



EAS00669

CHECKING THE HANDLEBARS

1. Check:
 - left handlebar ①
 - right handlebar ②

Bends/cracks/damage → Replace.

⚠ WARNING

Do not attempt to straighten bent handlebars as this may dangerously weaken them.

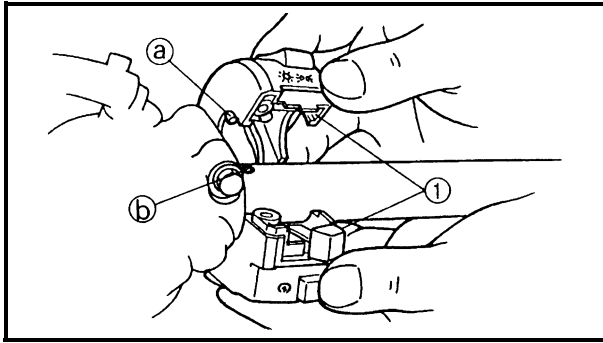
EAS00674

INSTALLING THE HANDLEBARS

1. Stand the motorcycle on a level surface.

⚠ WARNING

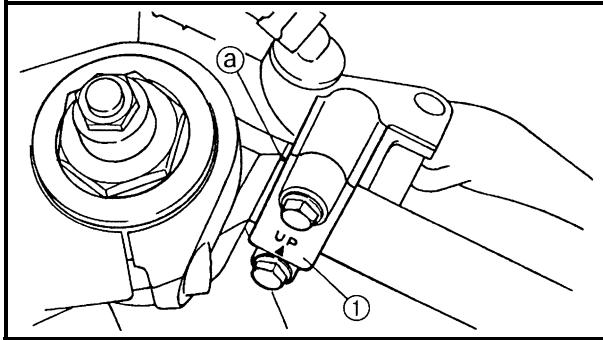
Securely support the motorcycle so that there is no danger of it falling over.



2. Install:
- right handlebar switch ①

NOTE:

Align the projection (a) on the right handlebar switch with the hole (b) in the right handlebar.



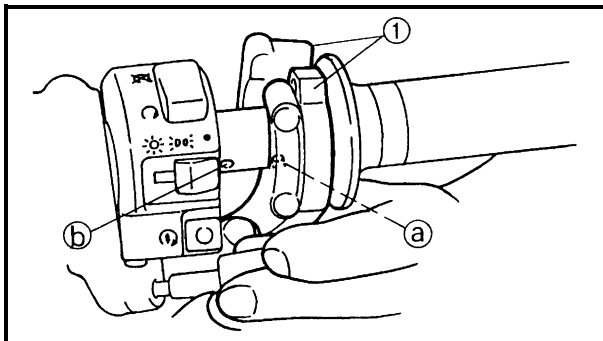
3. Install:
- brake master cylinder holder ①

CAUTION:

- Install the brake master cylinder holder with the “UP” mark facing up.
- First, tighten the upper bolt, then the lower bolt.

NOTE:

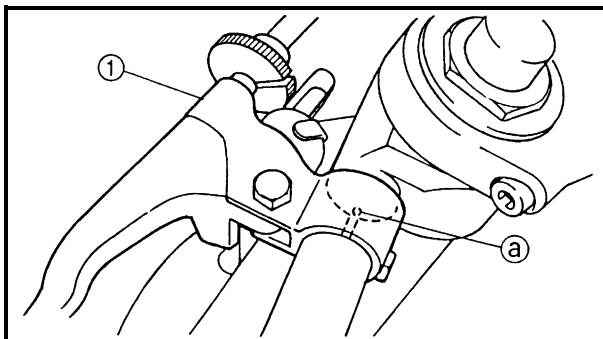
- Align the mating surfaces of the brake master cylinder holder with the punch mark (a) in the right handlebar.
- There should be 2 mm of clearance between the right handlebar switch and the brake master cylinder holder.



4. Install:
- throttle grip
 - throttle cable housing ①
 - throttle cables

NOTE:

Align the projection (a) on the throttle cable housing with the hole (b) in the right handlebar.



5. Install:
- clutch lever holder ①

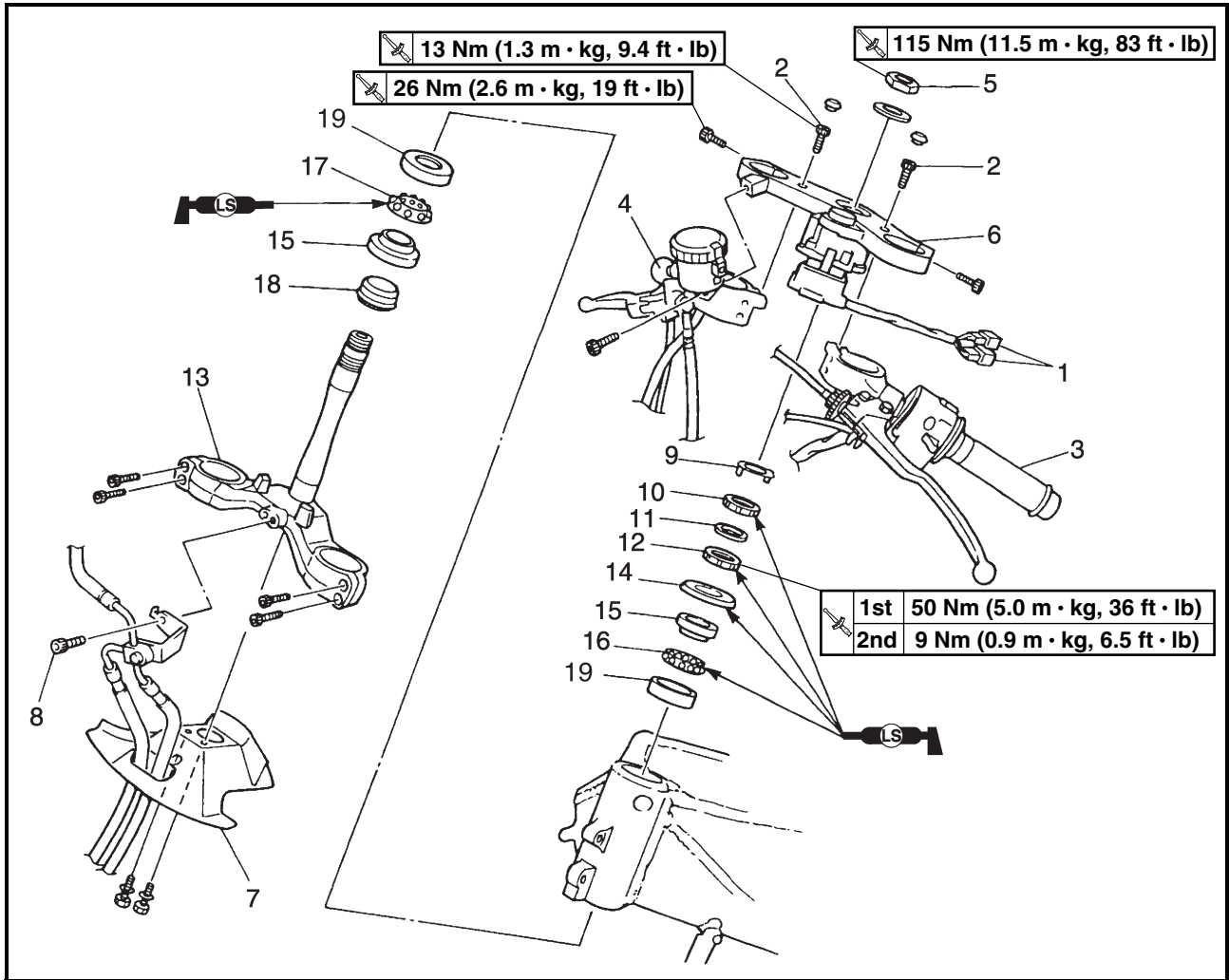
NOTE:

Align the slit in the clutch lever holder with the punch mark (a) in the left handlebar.

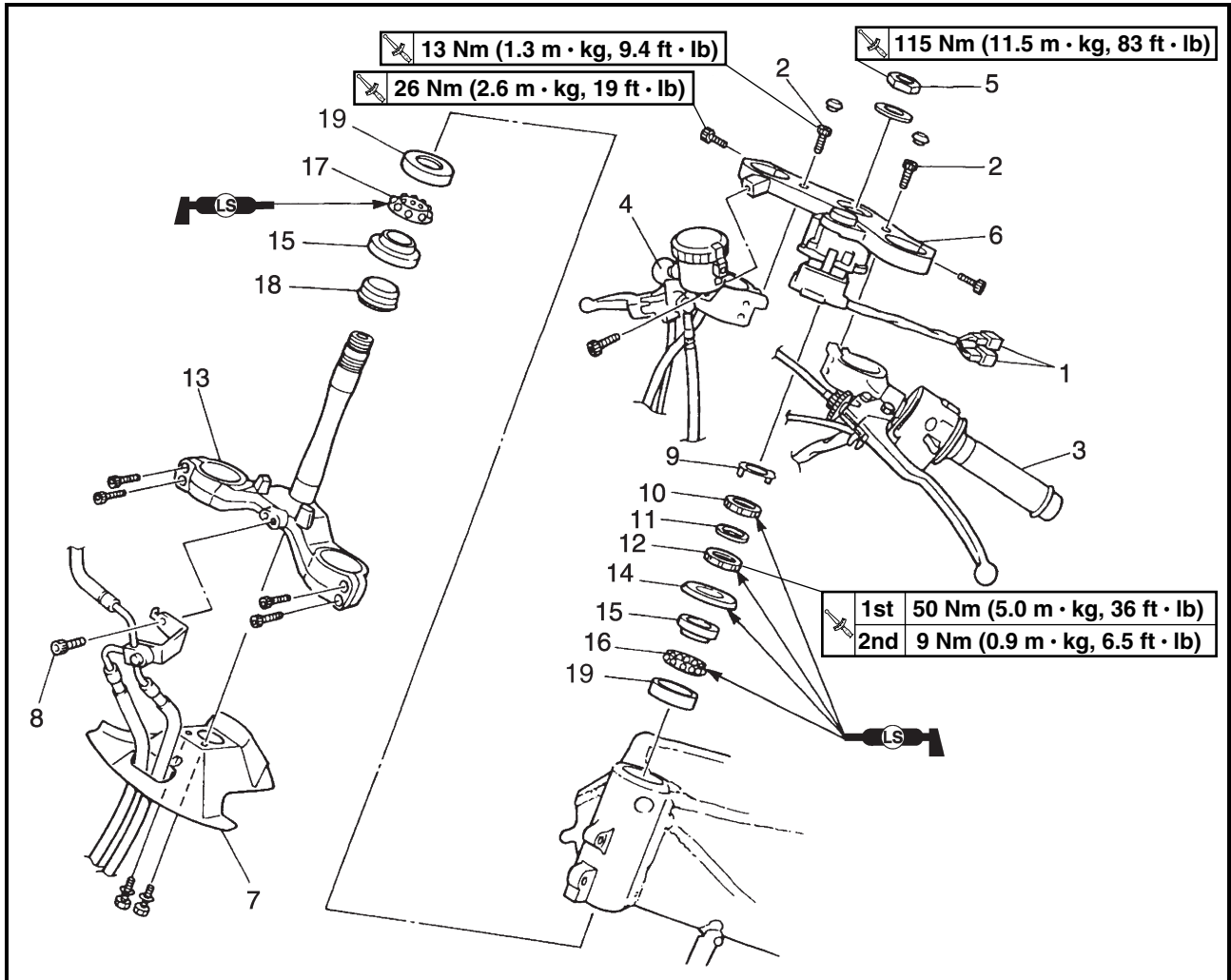


EAS00676

STEERING HEAD



Order	Job/Part	Q'ty	Remarks
	Removing the lower bracket		Remove the parts in the order listed.
	Front wheel		Refer to "FRONT WHEEL AND BRAKE DISCS".
	Front fork legs		Refer to "FRONT FORK".
1	Main switch coupler	2	Disconnect.
2	Upper bracket bolt	2	
3	Left handlebar assembly	1	
4	Right handlebar assembly	1	
5	Steering stem nut	1	
6	Upper bracket	1	
7	Lower bracket panel	1	
8	Brake hose holder bolt	1	
9	Lock washer	1	
10	Upper ring nut	1	
11	Rubber washer	1	



Order	Job/Part	Q'ty	Remarks
12	Lower ring nut	1	
13	Lower bracket	1	
14	Bearing cover	1	
15	Bearing inner race	2	
16	Upper bearing	1	
17	Lower bearing	1	
18	Dust seal	1	
19	Bearing outer race	2	
			For installation, reverse the removal procedure.



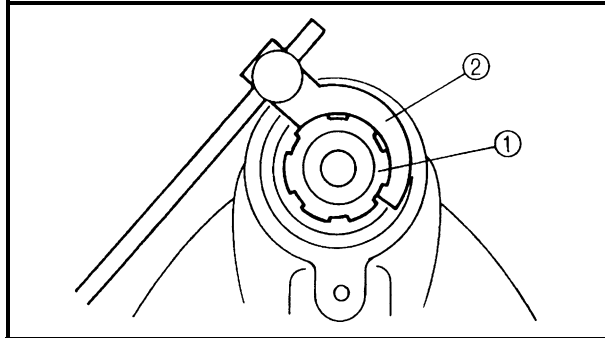
EAS00677

REMOVING THE LOWER BRACKET

- 1. Stand the motorcycle on a level surface.

⚠ WARNING

Securely support the motorcycle so that there is no danger of it falling over.



- 2. Remove:
 - ring nut ① (with the steering nut wrench ②)



**Steering nut wrench
YU-33975**

⚠ WARNING

Securely support the lower bracket so that there is no danger of it falling.

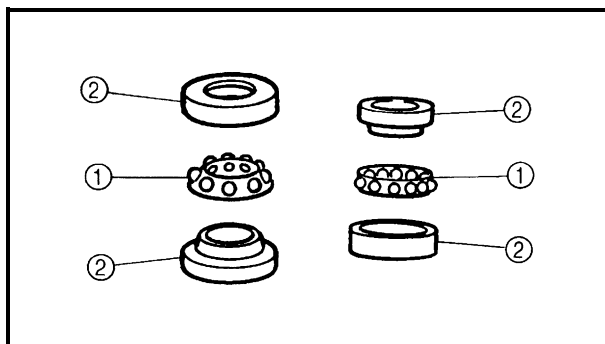
EAS00681

CHECKING THE STEERING HEAD

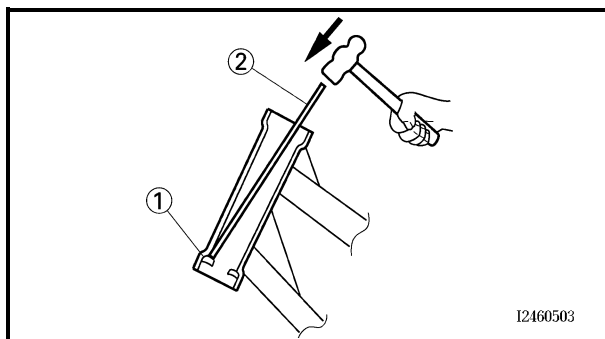
- 1. Wash:
 - bearings
 - bearing races



**Recommended cleaning solvent
Kerosene**

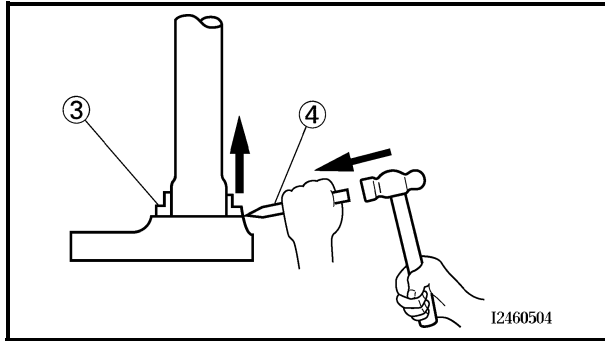


- 2. Check:
 - bearings ①
 - bearing races ②Damage/pitting → Replace.



- 3. Replace:
 - bearings
 - bearing races

- a. Remove the bearing races ① from the steering head pipe with a long rod ② and hammer.



- b. Remove the bearing race ③ from the lower bracket with a floor chisel ④ and hammer.
- c. Install a new rubber seal and new bearing races.

CAUTION: _____

If the bearing race is not installed properly, the steering head pipe could be damaged.

NOTE: _____

- Always replace the bearings and bearing races as a set.
- Whenever the steering head is disassembled, replace the rubber seal.



4. Check:

- upper bracket
- lower bracket
(along with the steering stem)
Bends/cracks/damage → Replace.

EAS00683

INSTALLING THE STEERING HEAD

1. Lubricate:

- upper bearing
- lower bearing
- bearing races

	Recommended lubricant Lithium-soap-based grease
--	--

2. Install:

- lower ring nut ①
- rubber washer ②
- upper ring nut ③
- lock washer ④

Refer to “CHECKING AND ADJUSTING THE STEERING HEAD” in chapter 3.

3. Install:

- upper bracket
- steering stem nut

NOTE: _____

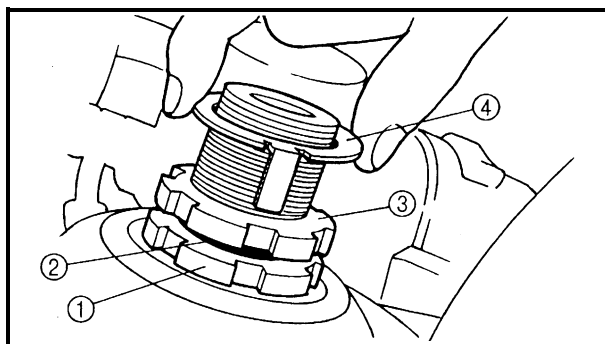
Temporarily tighten the steering stem nut.

4. Install:

- front fork legs
Refer to “INSTALLING THE FRONT FORK LEGS”.

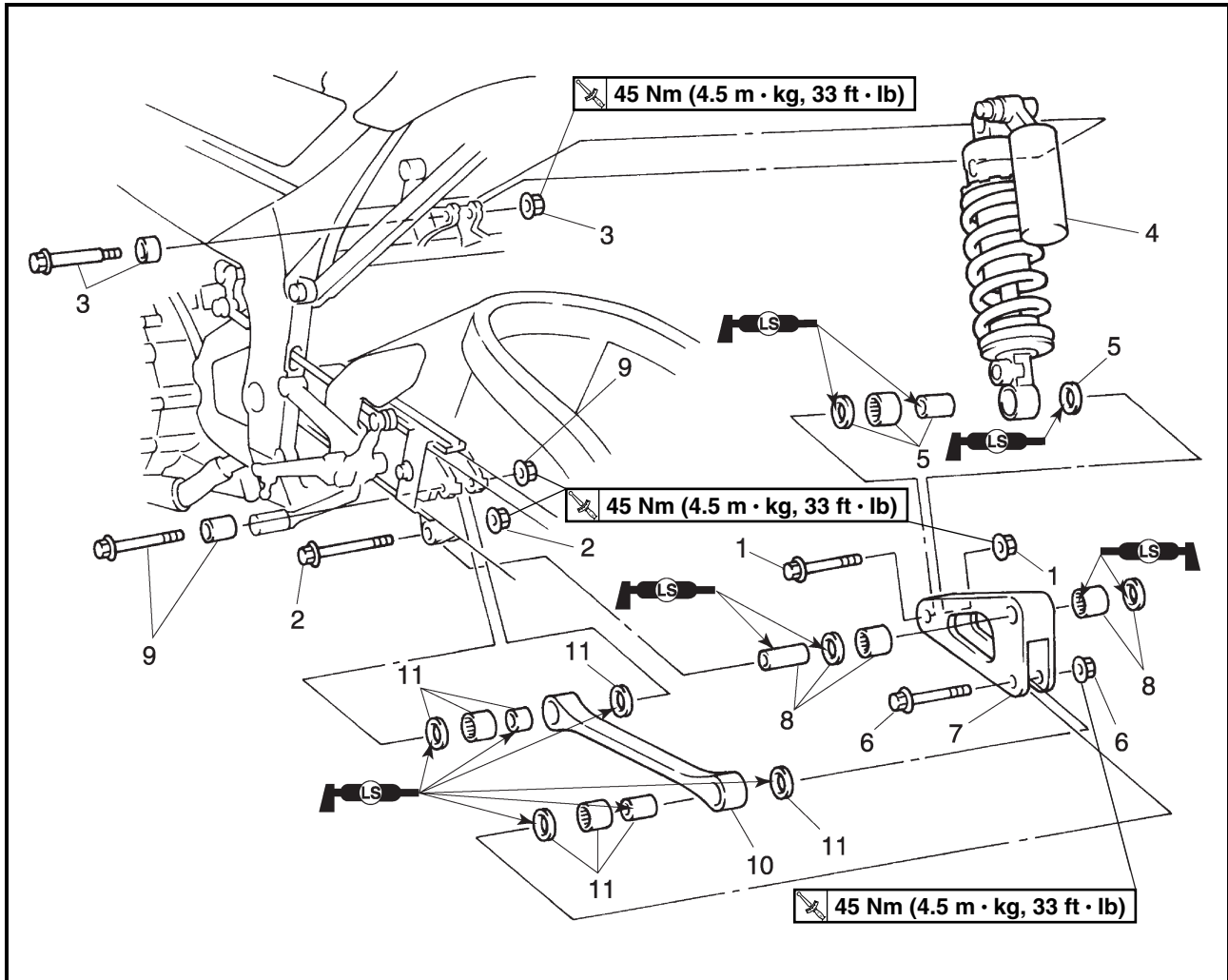
NOTE: _____

Temporarily tighten the upper and lower bracket pinch bolts.



EAS00685

REAR SHOCK ABSORBER ASSEMBLY



Order	Job/Part	Q'ty	Remarks
	Removing the rear shock absorber assembly		Remove the parts in the order listed.
1	Self-locking nut/bolt	1/1	
2	Self-locking nut/bolt	1/1	
3	Self-locking nut/bolt/spacer	1/1/1	
4	Rear shock absorber assembly	1	
5	Collar/oil seal/bearing	1/2/1	
6	Self-locking nut/bolt	1/1	
7	Relay arm	1	
8	Collar/oil seal/bearing	1/2/2	
9	Self-locking nut/bolt/collar	1/1/1	
10	Connecting arm	1	
11	Collar/oil seal/bearing	2/4/2	
			For installation, reverse the removal procedure.



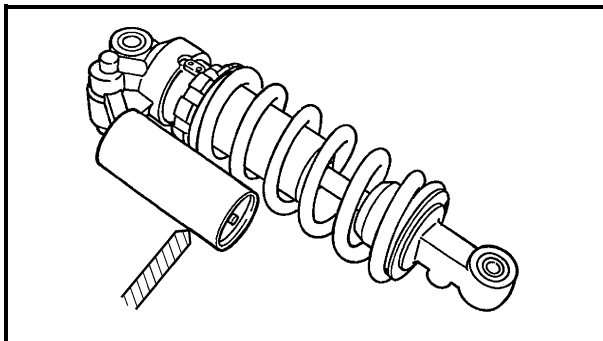
EAS00687

HANDLING THE REAR SHOCK ABSORBER AND GAS CYLINDER

⚠ WARNING

This rear shock absorber and gas cylinder contain highly compressed nitrogen gas. Before handling the rear shock absorber or gas cylinder, read and make sure you understand the following information. The manufacturer cannot be held responsible for property damage or personal injury that may result from improper handling of the rear shock absorber and gas cylinder.

- Do not tamper or attempt to open the rear shock absorber or gas cylinder.
- Do not subject the rear shock absorber or gas cylinder to an open flame or any other source of high heat. High heat can cause an explosion due to excessive gas pressure.
- Do not deform or damage the rear shock absorber or gas cylinder in any way. If the rear shock absorber, gas cylinder or both are damaged, damping performance will suffer.



EAS00689

DISPOSING OF A REAR SHOCK ABSORBER AND GAS CYLINDER

Gas pressure must be released before disposing of a rear shock absorber and gas cylinder. To release the gas pressure, drill a 2 ~ 3 mm (0.08 ~ 0.12 in) hole through the gas cylinder at a point 15 ~ 20 mm (0.59 ~ 0.79 in) from its end as shown.

⚠ WARNING

Wear eye protection to prevent eye damage from released gas or metal chips.



EAS00690

REMOVING THE REAR SHOCK ABSORBER ASSEMBLY

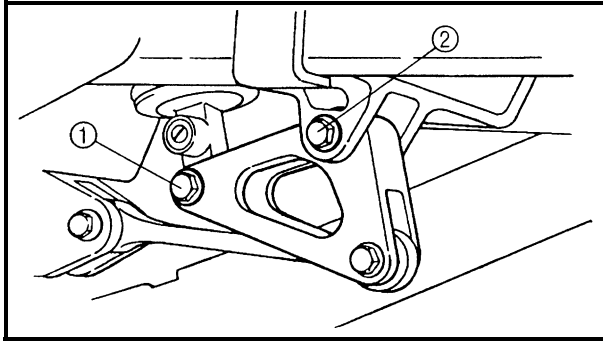
1. Stand the motorcycle on a level surface.

⚠ WARNING

Securely support the motorcycle so that there is no danger of it falling over.

NOTE:

Place the motorcycle on a suitable stand so that the rear wheel is elevated.

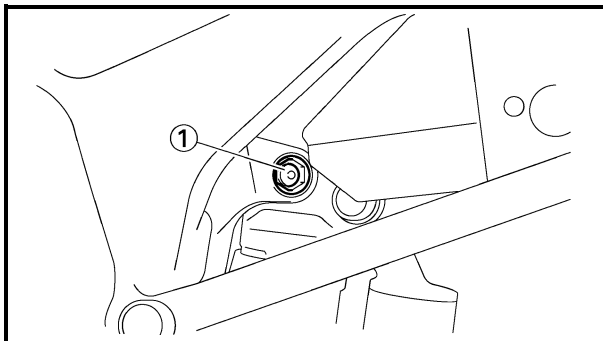


2. Remove:

- rear shock absorber assembly lower bolt ①
- relay arm-to-swingarm bolt ②

NOTE:

While removing the rear shock absorber assembly lower bolt, hold the swingarm so that it does not drop down.

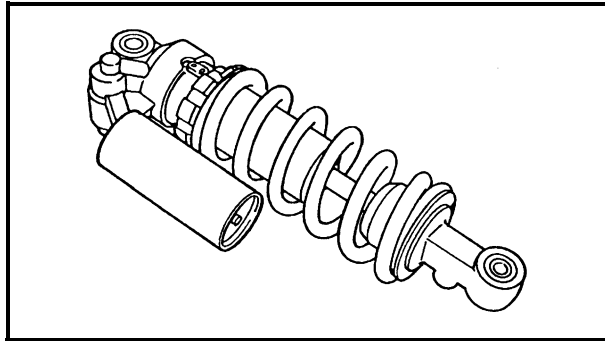


3. Remove:

- rear shock absorber assembly upper bolt ①
- rear shock absorber assembly

NOTE:

Raise the swingarm and then remove the rear shock absorber assembly from between the swingarm.



EAS00695

CHECKING THE REAR SHOCK ABSORBER ASSEMBLY

1. Check:

- rear shock absorber rod
Bends/damage → Replace the rear shock absorber assembly.
- rear shock absorber
Gas leaks/oil leaks → Replace the rear shock absorber assembly.
- spring
Damage/wear → Replace the rear shock absorber assembly.
- bushings
Damage/wear → Replace.
- dust seals
Damage/wear → Replace.
- bolts
Bends/damage/wear → Replace.

EAS00698

INSTALLING THE REAR SHOCK ABSORBER ASSEMBLY

1. Lubricate:

- spacers
- bearings

	Recommended lubricant Lithium-soap base grease
--	---

2. Install:

- rear shock absorber assembly

NOTE:

- When installing the rear shock absorber assembly, lift up the swingarm.
- Install the connecting arm front bolt from the right.

3. Tighten:

- rear shock absorber assembly upper nut

45 Nm (4.5 m · kg, 33 ft · lb)

- rear shock absorber assembly lower nut

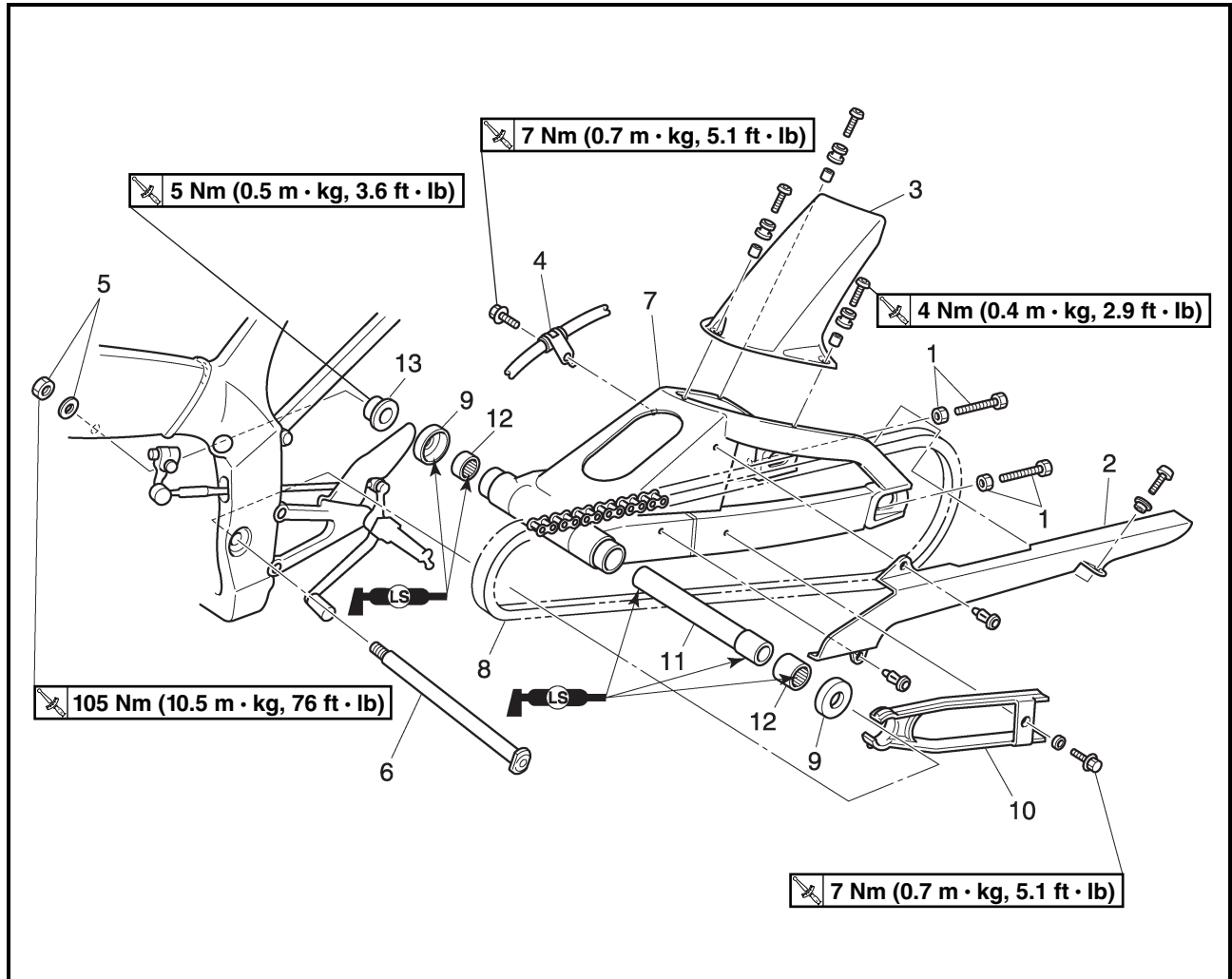
45 Nm (4.5 m · kg, 33 ft · lb)

- relay arm-to swingarm nut

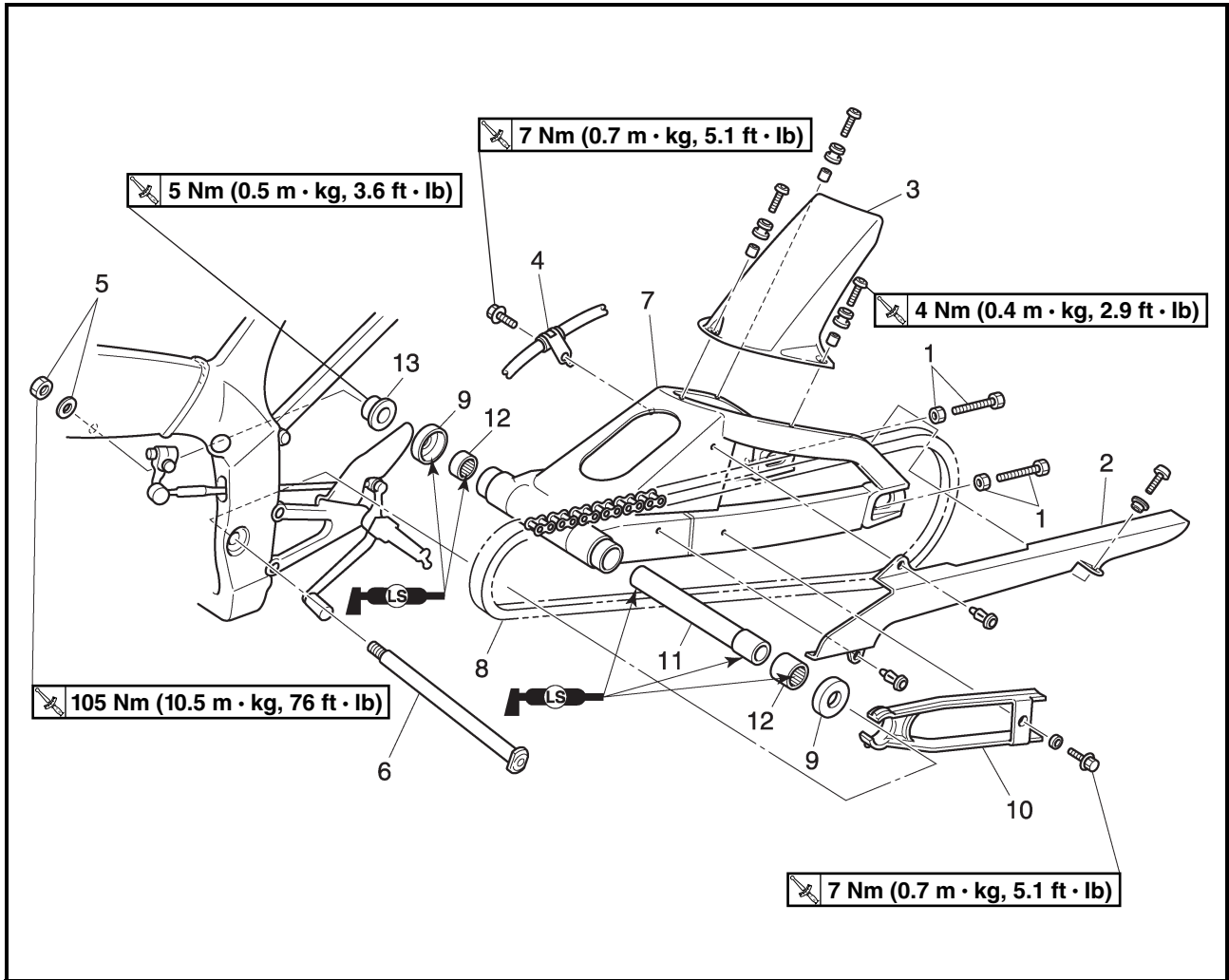
45 Nm (4.5 m · kg, 33 ft · lb)

EAS00700

SWINGARM AND DRIVE CHAIN



Order	Job/Part	Q'ty	Remarks
	Removing the swingarm and drive chain		Remove the parts in the order listed.
	Rear wheel		Refer to "REAR WHEEL AND BRAKE DISC".
	Rear shock absorber		Refer to "REAR SHOCK ABSORBER ASSEMBLY".
	Drive sprocket		Refer to "ENGINE" in chapter 5.
1	Adjusting bolt/locknut	2/2	
2	Drive chain guard	1	
3	Rear fender	1	
4	Brake hose holder	1	
5	Pivot shaft nut/washer	1/1	
6	Pivot shaft	1	
7	Swingarm	1	



Order	Job/Part	Q'ty	Remarks
8	Drive chain	1	For installation, reverse the removal procedure.
9	Dust cover	2	
10	Drive chain guide	1	
11	Spacer	1	
12	Bearing	2	
13	Pivot shaft adjust bolt	1	



EAS00704

REMOVING THE DRIVE CHAIN

1. Stand the motorcycle on a level surface.

⚠ WARNING

Securely support the motorcycle so that there is no danger of it falling over.

NOTE:

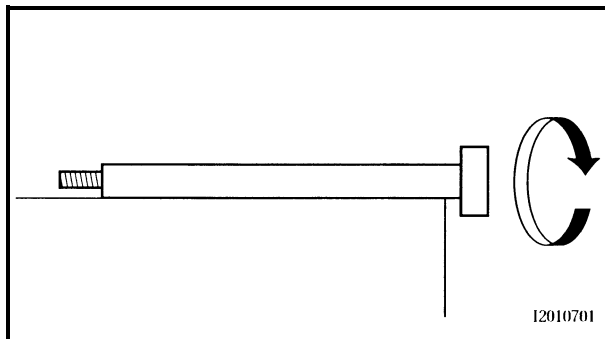
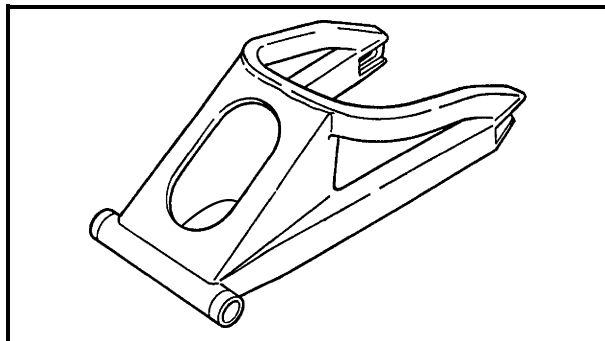
Place the motorcycle on a suitable stand so that the rear wheel is elevated.

2. Remove:

- drive chain
(with the drive chain cutter)

NOTE:

Only cut the drive chain if it or the swingarm is to be replaced.



EAS00707

CHECKING THE SWINGARM

1. Check:

- swingarm
Bends/cracks/damage → Replace.

2. Check:

- pivot shaft
Roll the pivot shaft on a flat surface.
Bends → Replace.

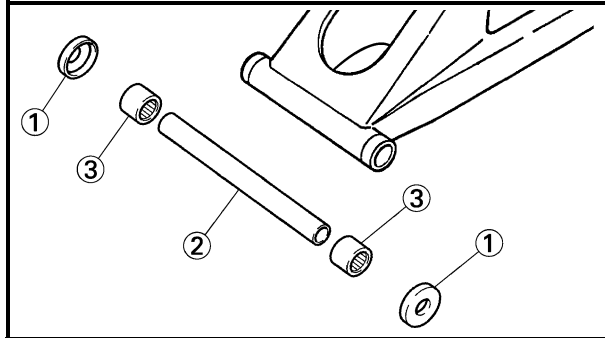
⚠ WARNING

Do not attempt to straighten a bent pivot shaft.

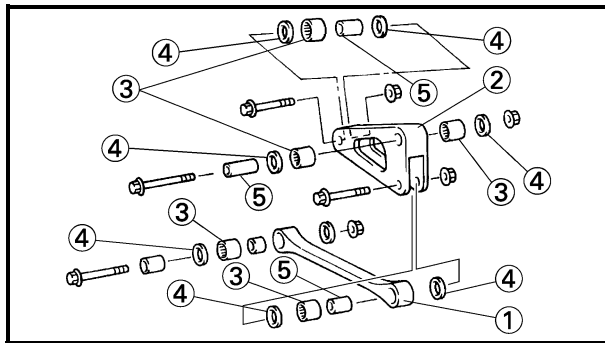


3. Wash:
- pivot shaft
 - dust covers
 - spacer
 - washers
 - bearings

	Recommended cleaning solvent Kerosene
---	--



4. Check:
- dust covers ①
 - spacer ②
Damage/wear → Replace.
 - bearings ③
Damage/pitting → Replace.



5. Check:
- connecting arms ①
 - relay arm ②
Damage/wear → Replace.

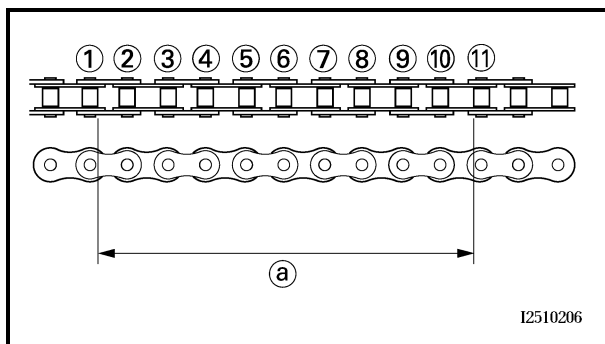
6. Check:
- bearings ③
 - oil seals ④
Damage/pitting → Replace.

7. Check:
- collars ⑤
Damage/scratches → Replace.

EAS00709

CHECKING THE DRIVE CHAIN

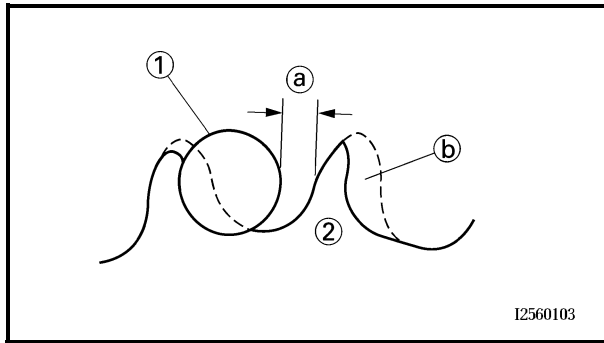
1. Measure:
- ten-link section ① of the drive chain
Out of specification → Replace the drive chain.



Ten-link drive chain section limit (maximum)
150.1 mm (5.91 in)

NOTE:

- While measuring the ten-link section, push down on the drive chain to increase its tension.
- Measure the length between drive chain roller ① and ⑪ as shown.
- Perform this measurement at two or three different places.



6. Check:

- drive sprocket
- rear wheel sprocket

More than 1/4 tooth (a) wear → Replace the drive chain sprockets as a set.

Bent teeth → Replace the drive chain sprockets as a set.

- (b) Correct
- (1) Drive chain roller
- (2) Drive chain sprocket

EAS00711

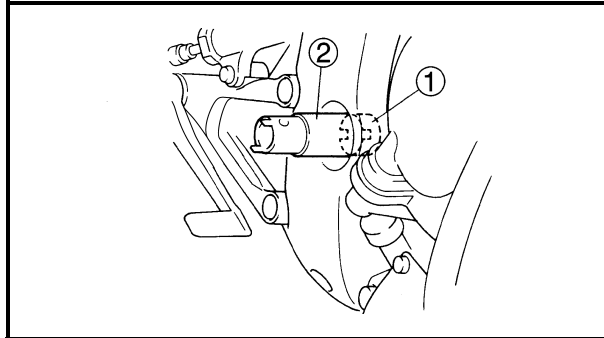
INSTALLING THE SWINGARM


1. Lubricate:

- bearings
- spacers
- dust covers
- pivot shaft adjust bolt (1)
- pivot shaft

NOTE:


Use the pivot shaft wrench (2) to tighten the pivot adjust bolt to specification torque.




	Pivot shaft wrench YM-01471
--	--

	Pivot shaft adjusting bolt 5 Nm (0.5 m · kg, 3.6 ft · lb)
---	--

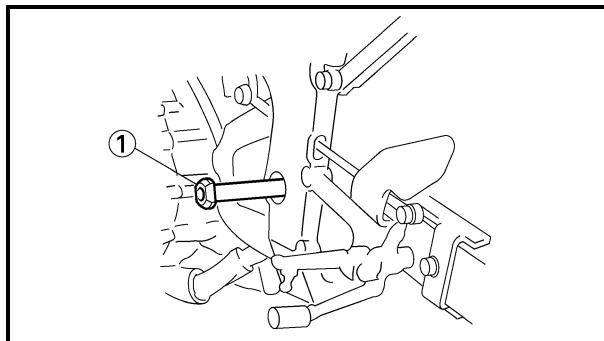
2. Install:

- relay arm  **45 Nm (4.5 m · kg, 33 ft · lb)**
- connecting arms

 **45 Nm (4.5 m · kg, 33 ft · lb)**

NOTE:

Install the connecting arm front bolt (1) from the left.



3. Install:


- rear shock absorber assembly
- rear wheel

Refer to “INSTALLING THE REAR SHOCK ABSORBER ASSEMBLY” and “INSTALLING THE REAR WHEEL”.

4. Adjust:

- drive chain slack

Refer to “ADJUSTING THE DRIVE CHAIN SLACK” in chapter 3.

	Drive chain slack 40 ~ 50 mm (1.57 ~ 1.97 in)
---	--